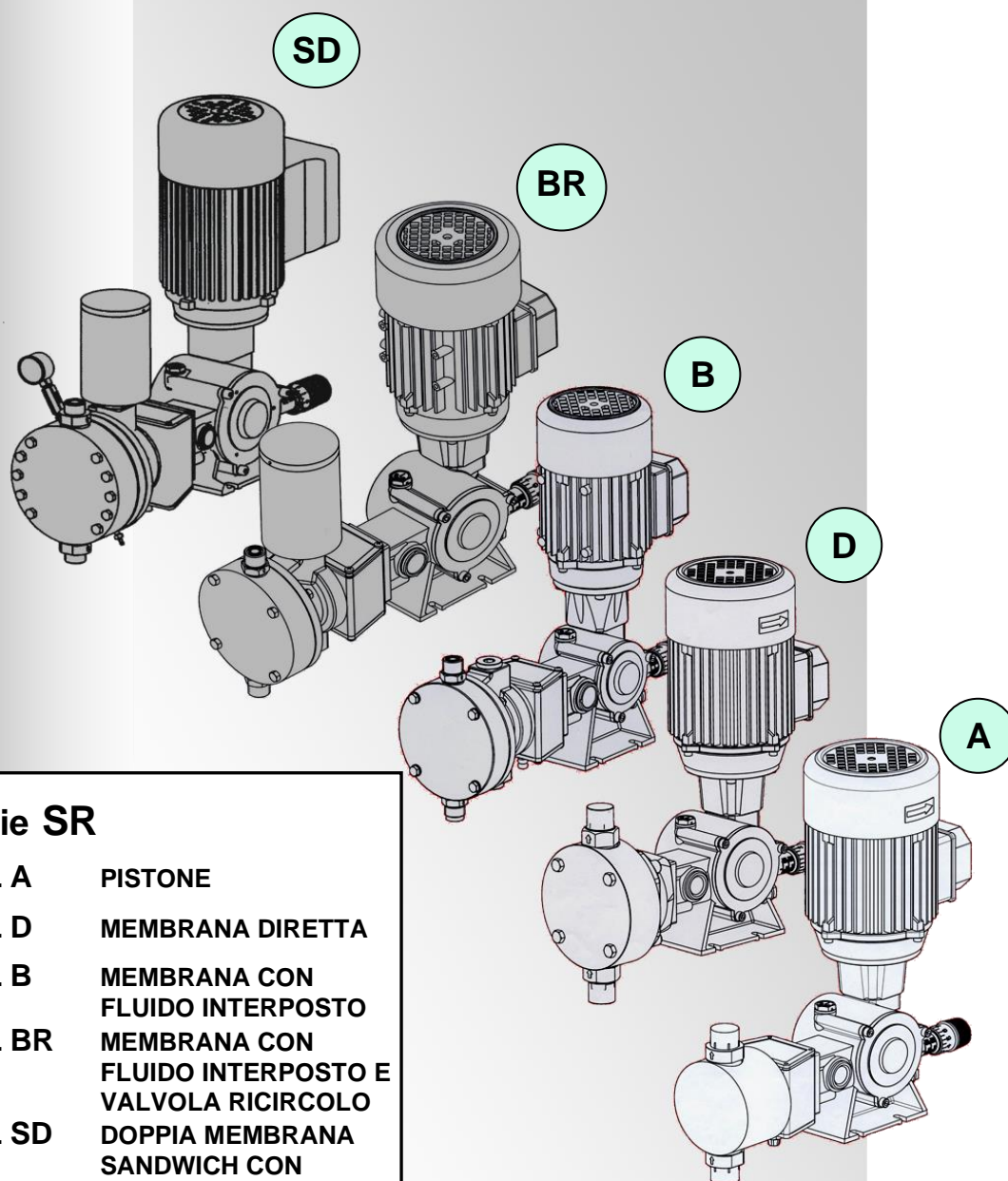




**ATTENZIONE:**  
Macchinario industriale per uso professionale.  
Queste istruzioni sono per personale specializzato



Disegni sezione/ Sectional drawing



### **Serie SR**

- |         |                                                                    |
|---------|--------------------------------------------------------------------|
| mod. A  | PISTONE                                                            |
| mod. D  | MEMBRANA DIRETTA                                                   |
| mod. B  | MEMBRANA CON FLUIDO INTERPOSTO                                     |
| mod. BR | MEMBRANA CON FLUIDO INTERPOSTO E VALVOLA RICIRCOLO                 |
| mod. SD | DOPPIA MEMBRANA SANDWICH CON FLUIDO INTERPOSTO E VALVOLA RICIRCOLO |

**Pompa dosatrice alternativa con ritorno a molla**

**Alternative dosing pump with spring return**



DOC. N°:	XLPIEPCG125NST020	Rev. 0	LINGUA:	ITA/ENG	Data:	10/03/2020
Preparato:	Gianluigi VENERONI	Controllato:	Luca FUMAGALLI	Sost. II:	-	

Rev.	Descrizione	Controllato	Data

DosingPump.ir

## Sommario

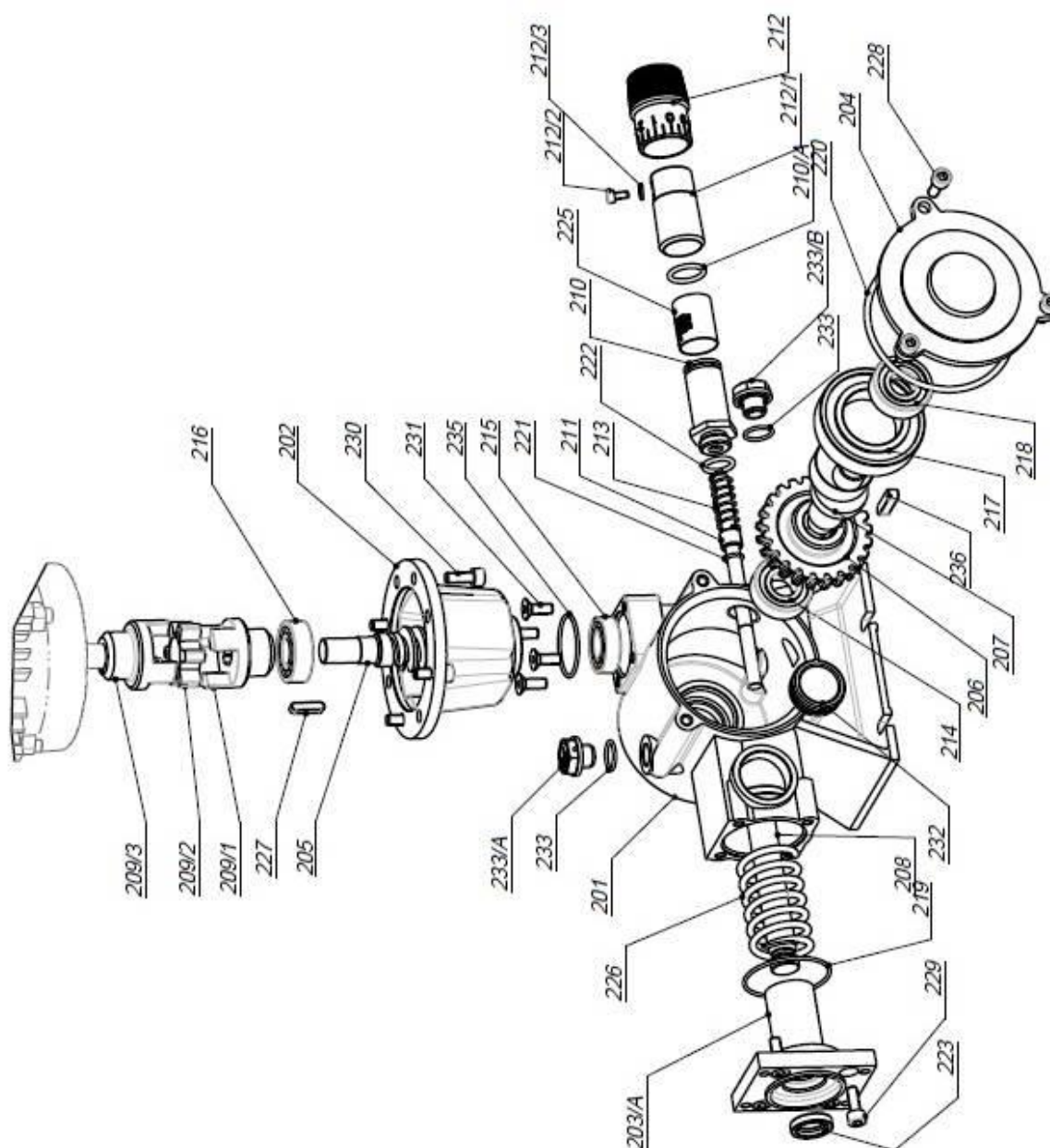
<b>1 - GRUPPO MOVIMENTO/ GEARBOX.....</b>	<b>5</b>
<b>1.1 Gruppo movimento / Gearbox .....</b>	<b>6</b>
<b>1.2 - Configuration 350N series .....</b>	<b>8</b>
<b>1.3 - Configuration 125N – 175N – 250N series .....</b>	<b>8</b>
<b>1.4 - Configuration D050N – D100N – D101N – D121N series.....</b>	<b>8</b>
<b>1.5 - Regolazione manuale - Manual adjustment.....</b>	<b>9</b>
<b>1.6 - Regolazione elettrica MVH 56F – Electric adjustment MVH 56F.....</b>	<b>9</b>
<b>1.7 - Regolazione pneumatica SC/BQ – Pneumatic adjustment SC/BQ.....</b>	<b>9</b>
<b>1.8 - sezione riduttore pompa multipla - Multiple pump reducer gear sectional drawing .....</b>	<b>10</b>
<b>1.8 - sezione riduttore pompa multipla - Multiple pump reducer gear sectional drawing .....</b>	<b>11</b>
<b>1.9 - Elenco componenti meccanismo/ Reducer gear components list .....</b>	<b>12</b>
<b>1.10 - Solo per pompa D122E/ Only for pump type D122E .....</b>	<b>14</b>
<b>2 - SEZIONI TESTATE A PISTONE TIPO A/ PISTON HEAD TYPE A SECTIONAL DRAWING.....</b>	<b>15</b>
<b>2.1 - SEZIONI TESTATE IN MATERIALE INOX/ PUMP HEAD SECTIONAL DRAWING STAINLESS STEEL MATERIAL .....</b>	<b>16</b>
Modello/ Model A 125N - A 175N – Pistone/ Piston Ø 6 - 11 - 18 .....	16
Modello/ Model A 125N - A 175N – Pistone/ Piston Ø 25 - 30 .....	16
Modello/ Model A 125N - A 175N – Pistone/ Piston Ø38 – 47 - A 250N – Pistone/ Piston Ø25 - 38 – 47 .....	16
Modello/ Model A 175N – Pistone/ Piston Ø 54 – 64 - .....	17
Modello/ Model A 125N - A 175N – Pistone/ Piston Ø 17 - 25 - 30 - 47 - CL.....	17
Modello/ Model A 175N – Pistone/ Piston Ø 64 – CL - A 250N – Pistone/ Piston Ø 54 – 64 – 76 – 89 – CL / A 350N – Piston Ø 89 – CL .....	17
Modello/ Model A 125N - A175N – Pistone/ Piston Ø 8 - 12 - 14 - 16 – 18 – AP .....	18
Modello/ Model A 125N - A 175N – Pistone/ Piston Ø 8 - 12 - 14 - 16 – 18 - AP – CL .....	18
Modello/ Model A 125N - A 175N – Pistone/ Piston Ø 6 - 11 -18 - 25 - 30 - 38 - 47 guarnizioni a pacco/ gasket set - A 250N – Pistone/ Piston Ø 30 - 38 – 47 – 54 - 64 guarnizioni a pacco /gasket set .....	18
Modello/ Model A 250N – Pistone/ Piston Ø 54 – 64 – 76 – 89/ A 350N – Pistone/ Piston Ø 54 – 64 – 76 .....	19
Modello/ Model A 250N – Pistone/ Piston Ø 12 - 14 - 16 – 18 - 22 – AP.....	19
Modello/ Model A 250N – Pistone/ Piston Ø 12 - 14 - 16 – 18 – 20 - 22 - AP – CL.....	19
<b>2.2 - SEZIONI TESTATE IN MATERIALE PLASTICO / PUMP HEAD SECTIONAL DRAWING PLASTIC MATERIAL ....</b>	<b>20</b>
Modello/ Model A 125N/175N – Pistone/ Piston Ø 6 - 11 - 18.....	20
Modello/ Model A 125N/175N – Pistone/ Piston Ø 25 - 30 - 38 - 47.....	20
Modello/ Model A 175N – Pistone/ Piston Ø 54 – 64 - A 250N – Pistone/ Piston Ø 54 – 64 – 76 – 89/ A 350N – Pistone/ Piston Ø 54 – 64 – 76.....	20
Modello/ Model A 250N – Pistone/ Piston Ø 47.....	21
Modello/ Model A 350N – Pistone/ Piston Ø 89.....	21
<b>2.3 - ELENCO COMPONENTI TESTATA/ PUMP HEAD COMPONENTS LIST .....</b>	<b>22</b>
<b>3 - SEZIONI TESTATE A MEMBRANA DIRETTA TIPO D/ MECHANICAL DIAPHRAGM HEAD TYPE D SECTIONAL DRAWING.....</b>	<b>23</b>
<b>3.1 - SEZIONI TESTATE IN MATERIALE INOX / PUMP HEAD SECTIONAL DRAWING STAINLESS STEEL MATERIAL .....</b>	<b>24</b>
Modello/ Model D 050 N -30 INOX.....	24
Modello/ Model D 050 N -50 INOX.....	24
Modello/ Model D 100N-D 101N-D 121N Ø 105 - 120 INOX.....	24
<b>3.2 - SEZIONI TESTATE IN MATERIALE PLASTICO / PUMP HEAD SECTIONAL DRAWING PLASTIC MATERIAL ....</b>	<b>25</b>
Modello/ Model D 050 N -30 PLASTIC.....	25
Modello/ Model D 050 N -50 PLASTIC.....	25
Modello/ Model D 100N-D 101N-D 121N Ø 105 - 120 PLASTIC.....	25
<b>3.3 - SEZIONI TESTATE IN MATERIALE INOX/PLASTICO - PUMP HEAD SECTIONAL DRAWING STAINLESS STEEL/ PLASTIC MATERIAL .....</b>	<b>26</b>

Modello/ Model D 122N Ø 140-160.....	26
<b>3.4 - ELENCO COMPONENTI TESTATA/ PUMP HEAD COMPONENTS LIST.....</b>	<b>26</b>
<b>4- SEZIONI TESTATE A MEMBRANA IDRAULICA TIPO B/ HYDRAULIC DIAPHRAGM HEAD TYPE B SECTIONAL</b>	
DRAWING .....	27
<b>4.1 - SEZIONI TESTATE IN MATERIALE INOX/ PLASTICO PUMP HEAD SECTIONAL DRAWING STAINLESS STEEL/ PLASTIC MATERIAL.....</b>	<b>28</b>
Modello/ Model B125N – B 175N Ø 8-12-18-25-30-40-55-65 – B 250N Ø 65-75-85-90.....	28
Modello/ Model B 250N Ø 40-50-55.....	29
<b>4.2 - ELENCO COMPONENTI TESTATA/ PUMP HEAD COMPONENTS LIST.....</b>	<b>30</b>
<b>5 - SEZIONI TESTATE A MEMBRANA IDRAULICA TIPO BR/ HYDRAULIC DIAPHRAGM HEAD TYPE BR SECTIONAL</b>	
DRAWING .....	31
<b>5.1 - SEZIONI TESTATE IN MATERIALE INOX/PLASTICO - PUMP HEAD SECTIONAL DRAWING STAINLESS STEEL/ PLASTIC MATERIAL.....</b>	<b>32</b>
Modello/ Model BR 125 N-BR 175N Ø 8-12-25-30-40-50 BR 250N Ø 65/75/90 .....	32
<b>5.2 - ELENCO COMPONENTI TESTATA/ PUMP HEAD COMPONENTS LIST.....</b>	<b>33</b>
<b>6 - SEZIONI TESTATE A MEMBRANA IDRAULICA TIPO SD/ HYDRAULIC DIAPHRAGM HEAD TYPE SD SECTIONAL</b>	
DRAWING .....	35
<b>6.1 - SEZIONI TESTATE IN MATERIALE INOX/ PLASTICO - PUMP HEAD SECTIONAL DRAWING STAINLESS STEEL/ PLASTIC MATERIAL .....</b>	<b>36</b>
Modello/ Model SD 125N Ø 8 to 40 – SD 175N Ø 8 to 65 – SD 250N Ø 8 to 110 .....	36
<b>6.2 - ELENCO COMPONENTI TESTATA/ PUMP HEAD COMPONENTS LIST.....</b>	<b>37</b>
<b>7 - SEZIONI VALVOLE/ VALVE SECTIONAL DRAWING .....</b>	<b>39</b>
<b>7.1 - SEZIONE VALVOLE IN MATERIALE PLASTICO/ VALVE SECTIONAL DRAWING PLASTIC MATERIAL .....</b>	<b>40</b>
Valvola/ Valve AC 3 - 5 - 8 DV .....	40
Valvola/ Valve AC 11 - 13.....	40
Valvola/Valve AC 13 DV .....	41
Valvola/ Valve AC 17-22.....	41
Valvola/ Valve AC 17 – 22 DV .....	42
Valvola/Valve AB 27 .....	42
<b>7.2 - SEZIONE VALVOLE IN MATERIALE INOX/ VALVE SECTIONAL DRAWING STAINLESS STEEL MATERIAL.....</b>	<b>43</b>
Valvola/Valve AB 3 – 5 .....	43
Valvola/Valve AB 8.....	43
Valvola/Valve AB 13 - 17.....	44
Valvola/ Valve AB 8 – 13 DV .....	44
Valvola/Valve AB 22.....	45
Valvola/ Valve AB 27 .....	45
<b>7.3 - ELENCO COMPONENTI VALVOLE/ VALVE COMPONENTS LIST.....</b>	<b>46</b>

## **1 - GRUPPO MOVIMENTO/ GEARBOX**

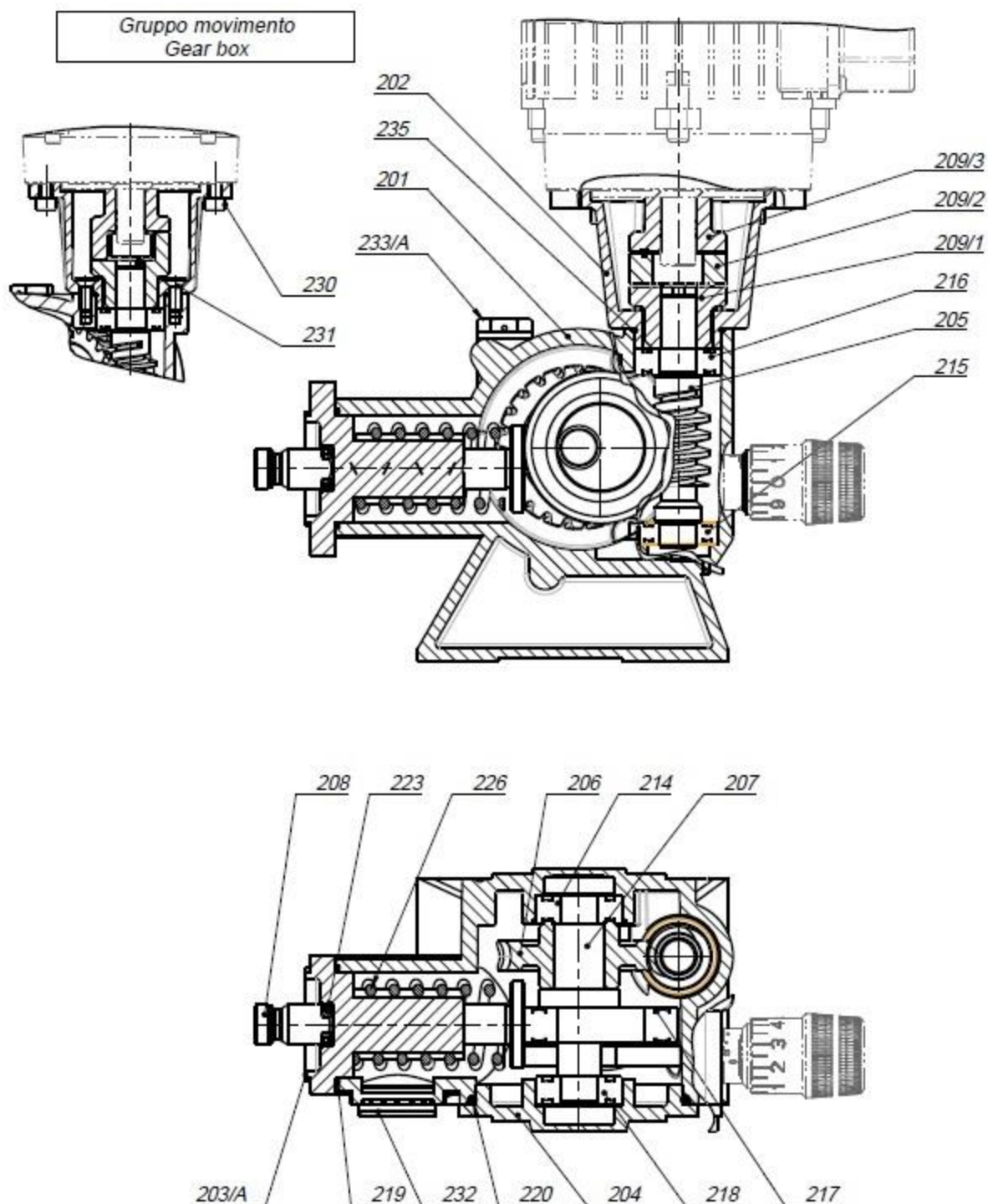
DosingPump.ir

## 1.1 Gruppo movimento / Gearbox



DosingPump.ir

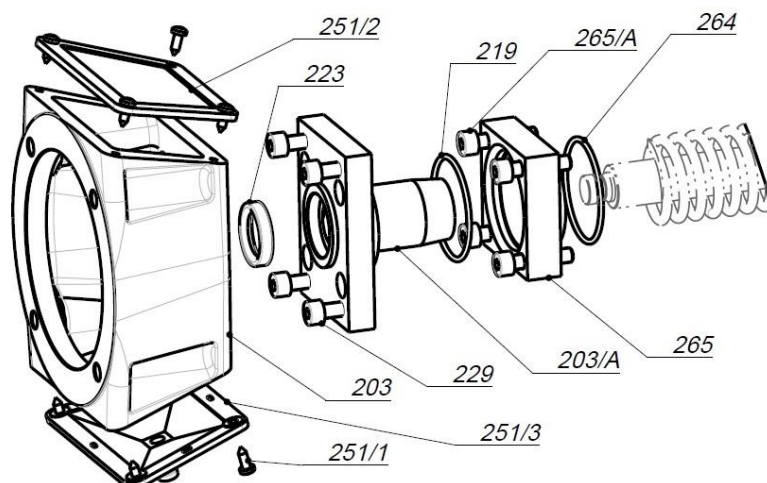
## 1.1 Gruppo movimento / Gearbox



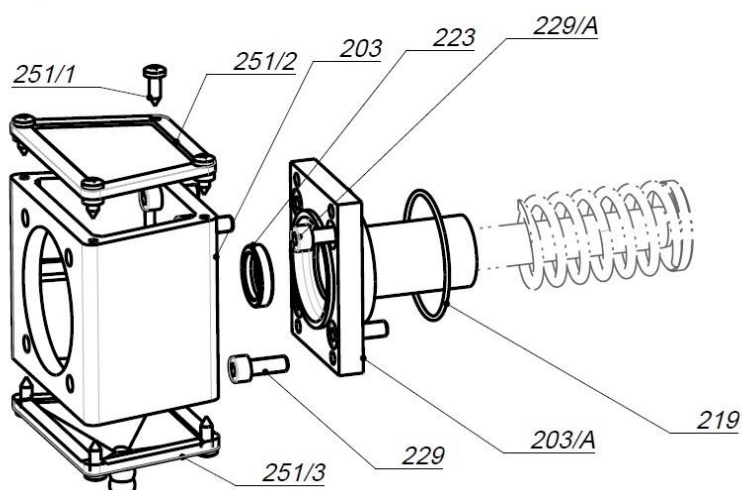
DosingPump.ir



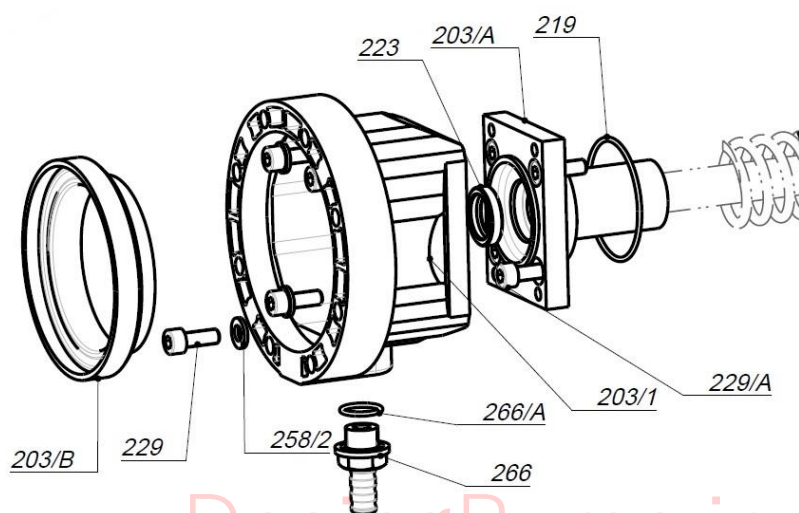
## 1.2 - Configuration 350N series



## 1.3 - Configuration 125N – 175N – 250N series



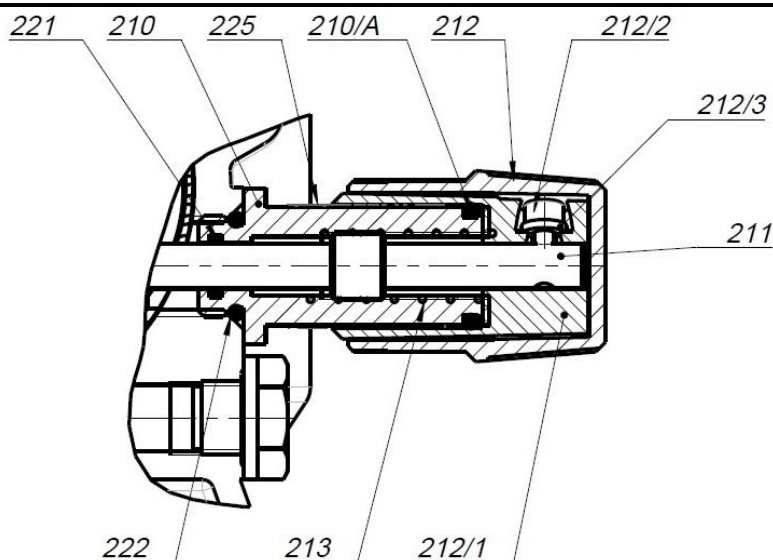
## 1.4 - Configuration D050N – D100N – D101N – D121N series



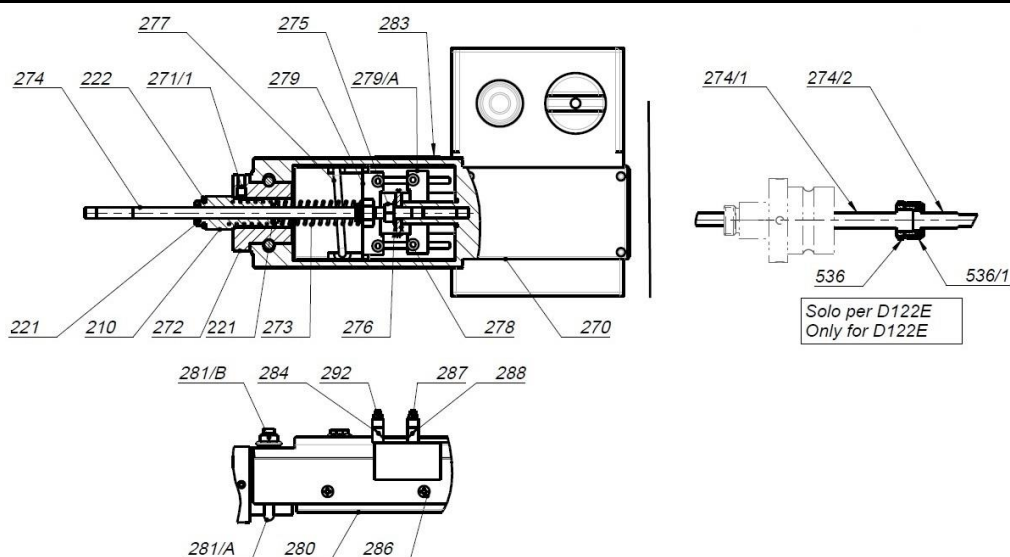
DosingPump.ir



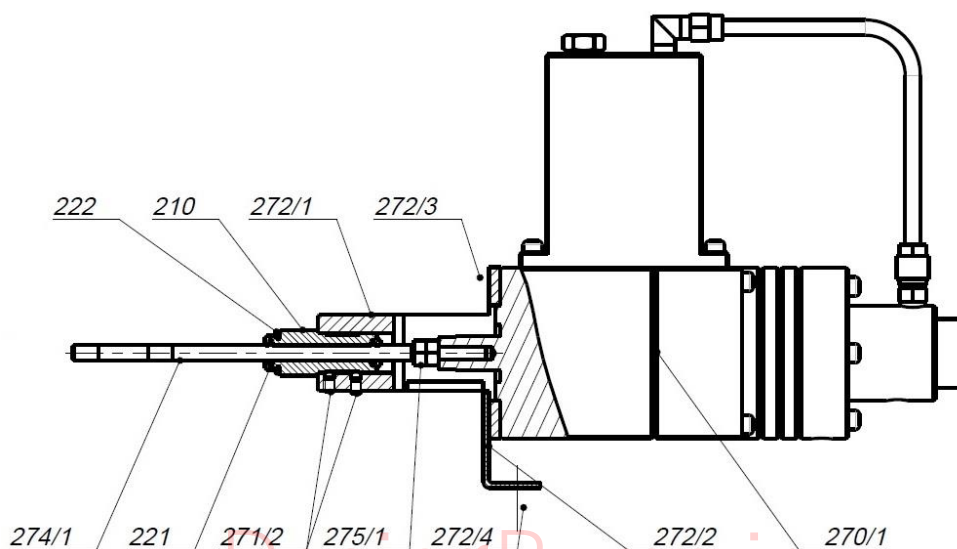
### 1.5 - Regolazione manuale - Manual adjustment



### 1.6 - Regolazione elettrica MVH 56F – Electric adjustment MVH 56F



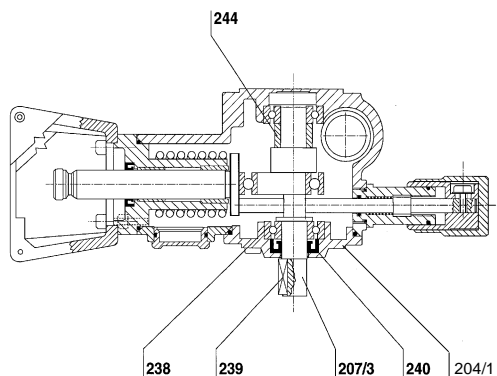
### 1.7 - Regolazione pneumatica SC/BQ – Pneumatic adjustment SC/BQ



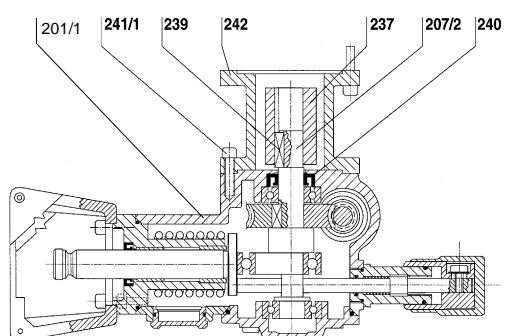
## 1.8 - sezione riduttore pompa multipla - Multiple pump reducer gear sectional drawing

### Pompa duplex sinistra/ Left duplex pump

#### Riduttore sinistro/ Left gearbox

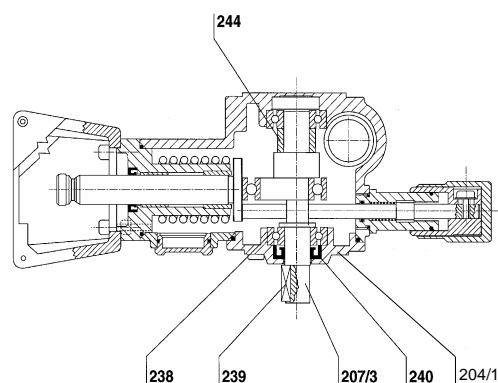


#### Riduttore principale estensione sinistra/ Main gearbox left extension

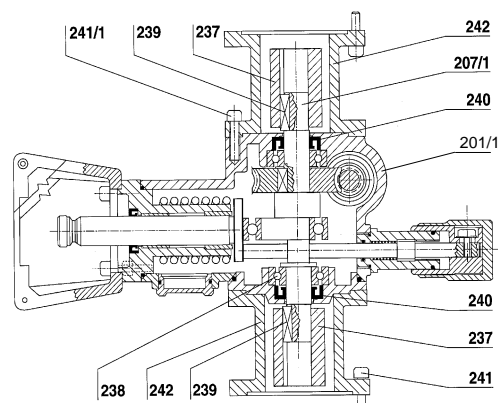


### Pompa triplex/ Triplex pump

#### Riduttore sinistro/ Left gearbox

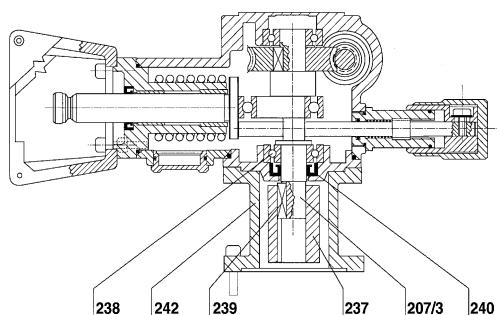


#### Riduttore principale/ Main gearbox

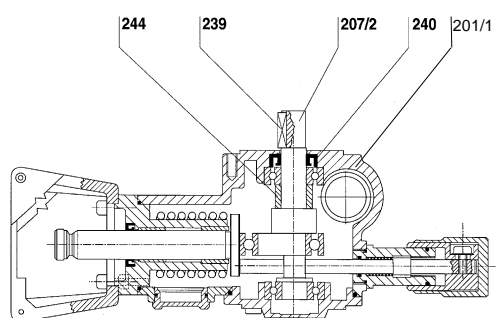


### Pompa duplex destra/ Right duplex pump

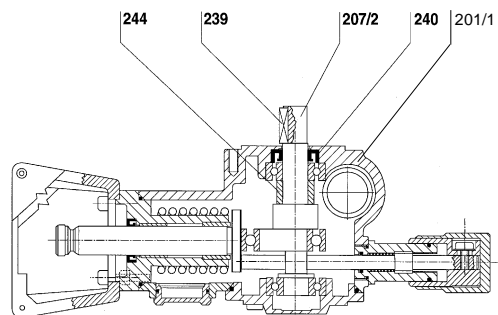
#### Riduttore principale estensione destra/ Main gearbox right extension



#### Riduttore destro/ Right gearbox



#### Riduttore destro/ Right gearbox

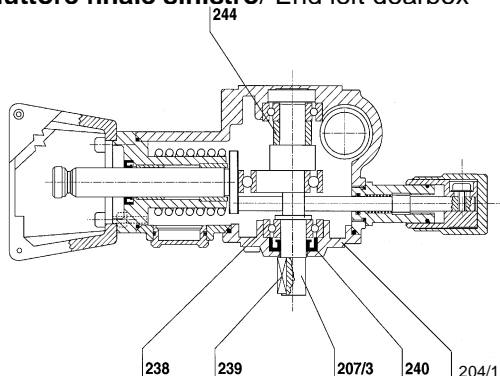


DosingPump.ir

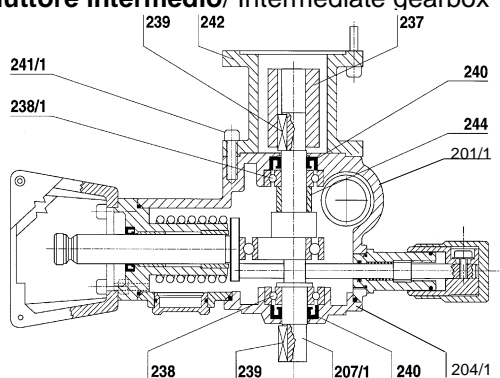
## 1.8 - sezione riduttore pompa multipla - Multiple pump reducer gear sectional drawing

### Pompa quadruplex/ Quadruplex pump

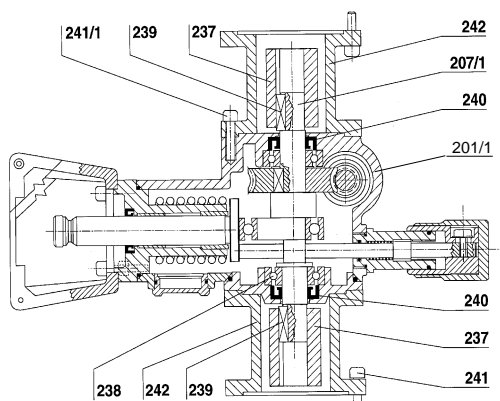
#### Riduttore finale sinistro/ End left gearbox



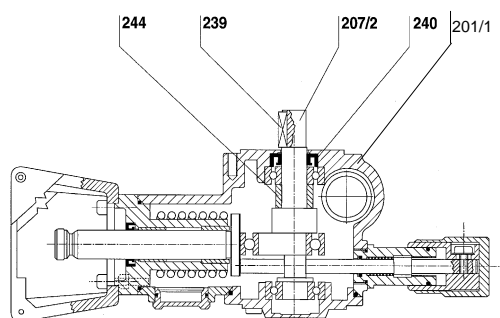
#### Riduttore intermedio/ Intermediate gearbox



#### Riduttore principale/ Main gearbox

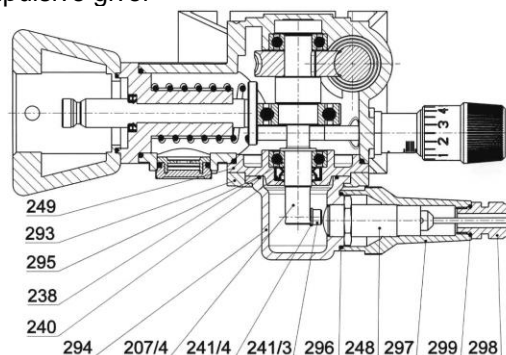


#### Riduttore finale destro/ End right gearbox



### Sensore induttivo/ Inductive sensor

#### Riduttore con datore d'impulsi/ Gearbox with impulsive giver



### 1.9 - Elenco componenti meccanismo/ Reducer gear components list

POS.	(*)	Componenti meccanismo	Mechanism parts
201		Corpo pompa	Gearbox case
201/1		Corpo pompa d'accoppiamento	Joining pump casing
202		Lantern portamotore	Motor flange
203	(1)	Lantern portatestata	Lantern head
203/1		Lantern portatestata in plastica (solo per serie "D")	Plastic lantern head ("D" series only)
203/A		Supporto slitta	Push – rod support
203/B		Anello (solo per serie "D")	Ring ("D" series only)
204		Coperchio	Cover
204/1		Coperchio per accoppiamento	Cover for joining
205	(1)	Vite senza fine	endless screw
206	(1)	Ruota elicoidale	Worm wheel
207		Albero	Crank Shaft
207/1		Albero con sporgenza doppia	Shaft with double extension
207/2		Albero con sporgenza a sinistra	Shaft with left extension
207/3		Albero con sporgenza a destra	Shaft with right extension
207/4		Albero	Shaft
208	(2)	Slitta	Push - rod
209/1		Giunto elastico (inferiore)	Bottom flexible coupling
209/2		Stella	Flexible insert
209/3	(1)	Giunto elastico (superiore)	Top flexible coupling
210		Supporto regolazione	Adjusting bearing
210/A		Guarnizione OR	O-Ring gasket
211	(1)	Vite di regolazione	Adjustment screw
212		Semi-manopola esterna	Outside knob
212/1		Semi-manopola interna	Internal knob
212/2		Vite	Screw
212/3		Rondella dentellata	Toothed washer
213		Molla	Spring
214	(1)	Cuscinetto	Bearing
215	(1)	Cuscinetto	Bearing
216	(1)	Cuscinetto	Bearing
217	(1)	Cuscinetto	Bearing
218	(1)	Cuscinetto	Bearing
219	(2)	Guarnizione OR	O-Ring gasket
220	(2)	Guarnizione OR	O-Ring gasket
221	(2)	Guarnizione OR	O-Ring gasket
222	(2)	Guarnizione OR	O-Ring gasket
223	(2)	Guarnizione MIM	MIM Gasket
225		Targhetta adesiva	Adhesive label
226	(1)	Molla	Spring
227		Chiavetta	Key
228		Vite	Screw
229		Vite	Screw
229/A		Vite	Screw
230		Vite	Screw
231		Vite	Screw
232		Indicatore livello olio	Sight-flow gauge
233		Guarnizione OR	O-Ring gasket
233/A		Tappo carico olio	Charge oil plug
233/B		Tappo scarico olio	Discharge oil plug
235	(2)	Guarnizione OR	O-Ring gasket
236		Chiavetta	Key
237		Giunto	Joint
238		Cuscinetto a sfere lato destro albero	Right side shaft ball bearing
238/1		Cuscinetto a sfere lato sinistro albero	Left side shaft ball bearing
239		Chiavetta	Key
240		Anello di tenuta	Seal ring
241		Vite	Screw

Dosing Pump.ir

### 1.9 - Elenco componenti meccanismo/ Reducer gear components list

POS.	(*)	Componenti meccanismo	Mechanism parts
241/1		Vite	Screw
241/3		Vite	Screw
241/4		Rondella piana	Flat washer
242		Lanterna	Lantern
244		Bussola (solo per serie 125N)	Bushing (only for 125N series)
248		Sensore induttivo	Inductive sensor
249		Coperchio	Cover
251/1		Vite	Screw
251/2	(1)	Coperchio "CE" (solo per serie "125N-175N-250N-350N")	"CE" Cover ("125N-175N-250N-350N" series only)
251/3	(1)	Coperchio "CE" (solo per serie "125N-175N-250N-350N")	"CE" Cover ("125N-175N-250N-350N" series only)
264		Guarnizione OR	O-Ring gasket
265		Distanziale	Spacer
265/A		Vite	Screw
266		Portagomma (solo per serie "D")	Hose ("D" series only)
266/A		Guarnizione OR	O-Ring gasket ("D" series only)
270		Servocomando elettrico	Electric adjustment
270/1		Servocomando pneumatico	Pneumatic adjustment
271/1		Grano (MVH56F)	Grub screw (MVH56F)
271/2		Grano (SC/BQ)	Grub screw (SC/BQ)
272		Supporto servocomando (MVH56F)	Adjustment support (MVH56F)
272/1		Distanziale supporto servocomando (SC/BQ)	Adjustment support spacer (SQ/BQ)
272/2		Staffa di supporto (SC/BQ)	Support bracket (SC/BQ)
272/3		Vite (SC/BQ)	Screw (SC/BQ)
272/4		Vite (SC/BQ)	Screw (SC/BQ)
273		Molla (MVH56F)	Spring (MVH56F)
274		Vite regolazione con guida (MVH56F)	Adjustment screw with guide (MVH56F)
274/1		Vite regolazione con guida (SC/BQ)	Adjustment screw with guide (SC/BQ)
275		Dado (MVH56F)	Nut (MVH56F)
275/1		Dado (SC/BQ)	Nut (SC/BQ)
276		Rondella (MVH56F)	Washer (MVH56F)
277		Cavallo di blocco servocomando (MVH56F)	U-lock actuator (MVH56F)
278		Indicatore di posizione (MVH56F)	Position indicator (MVH56F)
279		Cavallo di fine corsa (MVH56F)	Jumper stroke end (MVH56F)
279/A		Cavallo di fine corsa (MVH56F)	Jumper stroke end (MVH56F)
280		Copertura di protezione (MVH56F)	Protective cover (MVH56F)
281/A		Cavallo di blocco (MVH56F)	Jumper block (MVH56F)
281/B		Dado (MVH56F)	Nut (MVH56F)
283		Targhetta visualizzazione corsa (MVH56F)	Display plate racing (MVH56F)
284		Fermo di azzeramento (MVH56F)	Latch reset (MVH56F)
286		Vite (MVH56F)	Screw (MVH56F)
287		Dado (MVH56F)	Nut (MVH56F)
288		Fermo di azzeramento (MVH56F)	Latch reset (MVH56F)
292		Rondella dentellata (MVH56F)	Toothed washer (MVH56F)
293		Flangia di fissaggio	Fixing flange
294		Supporto sensore induttivo	Inductive sensor bracket
295		Guarnizione OR supporto	OR gasket bracket
296		Guarnizione OR cuffia	Cover OR gasket
297		Cuffia di copertura sensore induttivo	Inductive sensor cover
298		Pressacavo PG9	Cable gland PG9
299		Guarnizione OR pressacavo	OR gasket cable gland

(\*) Identificazione e frequenza delle parti soggette a ricambio, (1) = RARAMENTE (2) = POSSIBILE (3) = CERTO/  
Identification and frequency of parts subject to replacement, (1) = RARELY (2) = POSSIBLE (3) = CERTAIN

1.10 - Solo per pompa D122E/ Only for pump type D122E			
POS.	(*)	Componenti meccanismo	Mechanism parts
274		Vite regolazione lato pompa	Adjusting screw (pump side)
274/1		Vite regolazione lato attuatore	Adjusting screw (electric adjustment screw)
536		Ghiera di bloccaggio	Locking nut
536/1		Ghiera di bloccaggio	Locking nut
(*) Identificazione e frequenza delle parti soggette a ricambio, (1) = RARAMENTE (2) = POSSIBILE (3) = CERTO/ Identification and frequency of parts subject to replacement, (1) = RARELY (2) = POSSIBLE (3) = CERTAIN			

DosingPump.ir

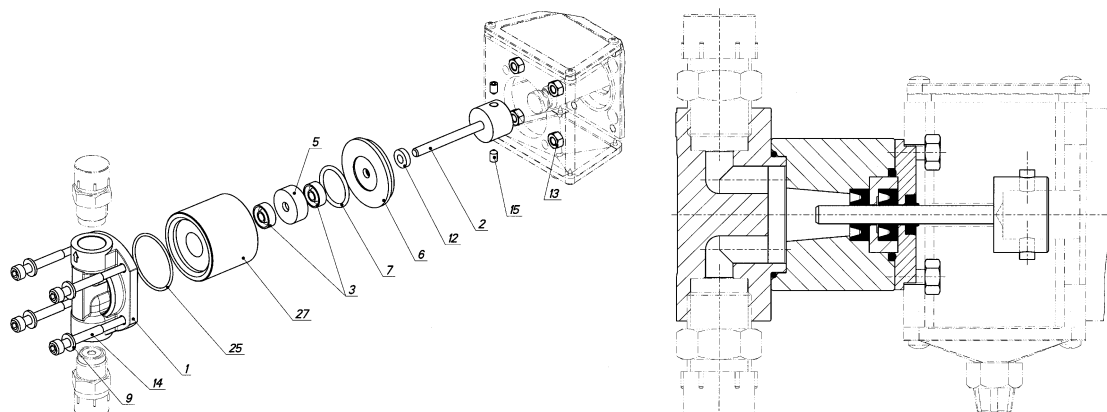


## **2 - SEZIONI TESTATE A PISTONE TIPO A/ PISTON HEAD TYPE A SECTIONAL DRAWING**

DosingPump.ir

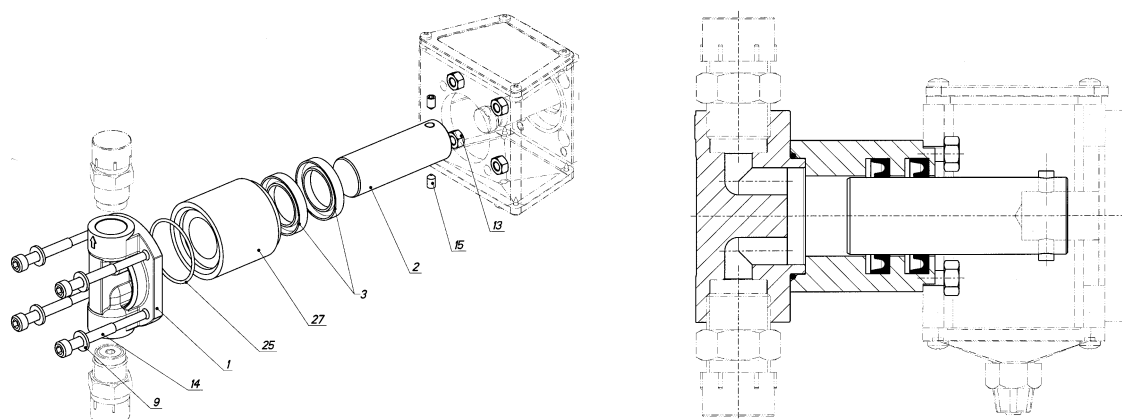
## 2.1 - SEZIONI TESTATE IN MATERIALE INOX/ PUMP HEAD SECTIONAL DRAWING STAINLESS STEEL MATERIAL

### Modello/ Model A 125N - A 175N – Pistone/ Piston Ø 6 - 11 - 18

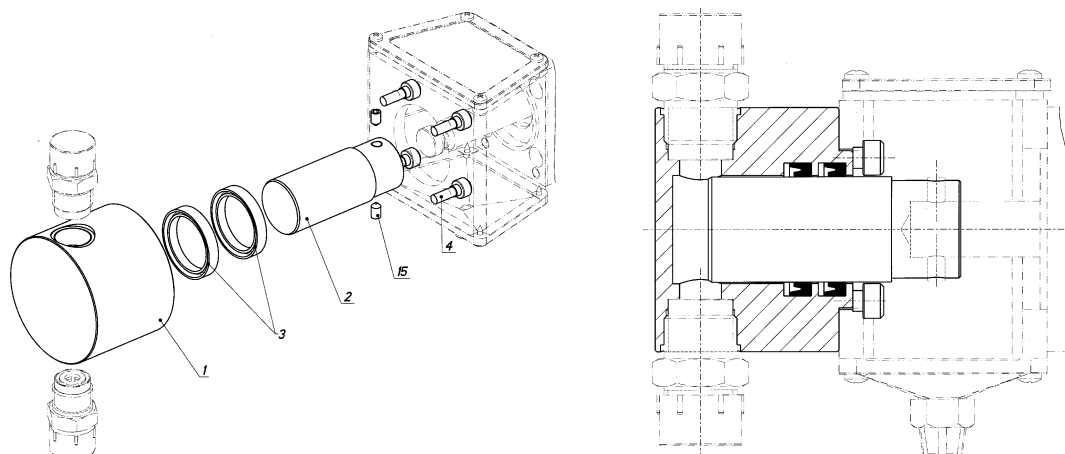


POS. 12 SOLO PER Ø 6/ POS. 12 only for size Ø 6

### Modello/ Model A 125N - A 175N – Pistone/ Piston Ø 25 - 30



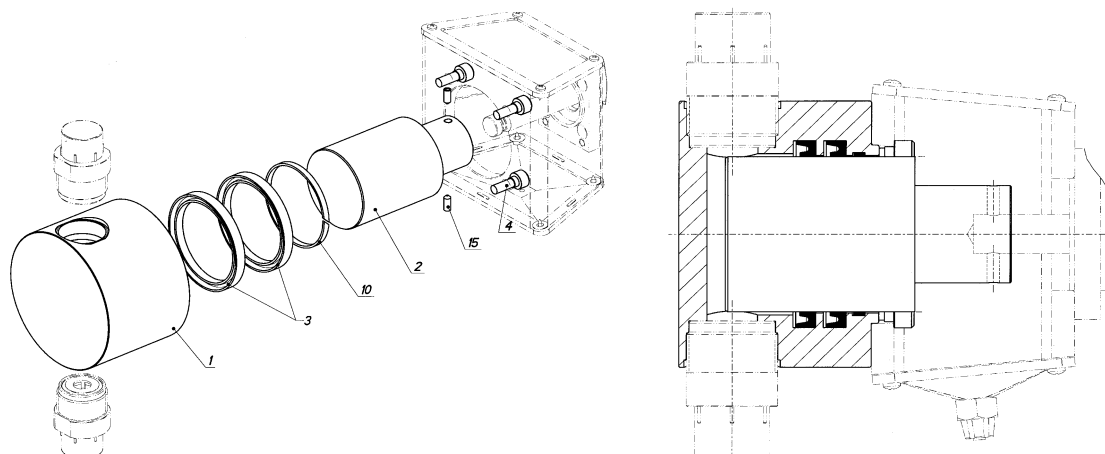
### Modello/ Model A 125N - A 175N – Pistone/ Piston Ø38 – 47 - A 250N – Pistone/ Piston Ø25 - 38 – 47



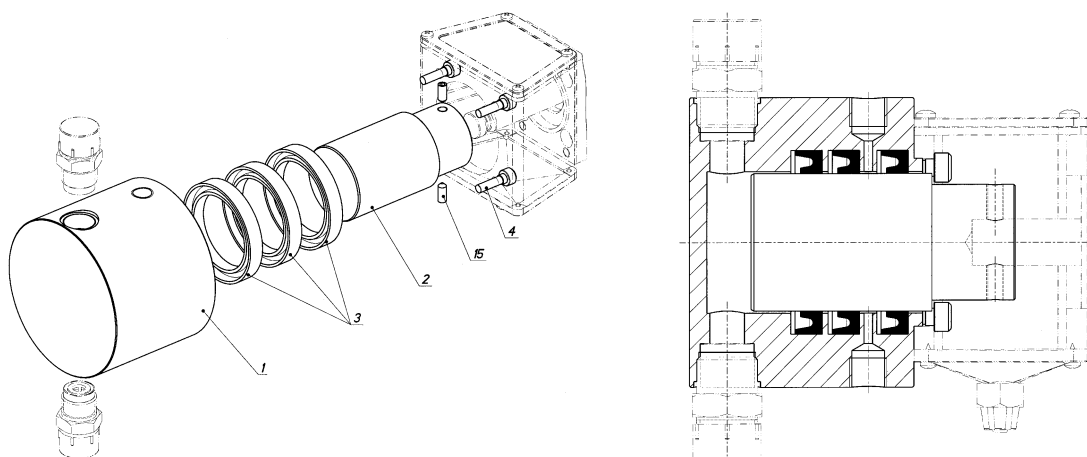
DosingPump.ir

## 2.1 - SEZIONI TESTATE IN MATERIALE INOX / PUMP HEAD SECTIONAL DRAWING STAINLESS STEEL MATERIAL

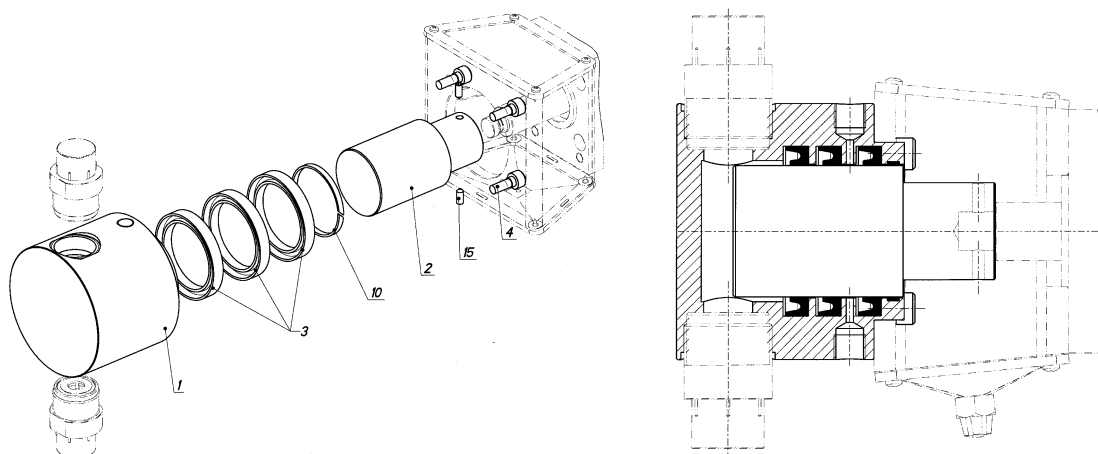
**Modello/ Model A 175N – Pistone/ Piston Ø 54 – 64 -**



**Modello/ Model A 125N - A 175N – Pistone/ Piston Ø 17 - 25 - 30 - 47 - CL**



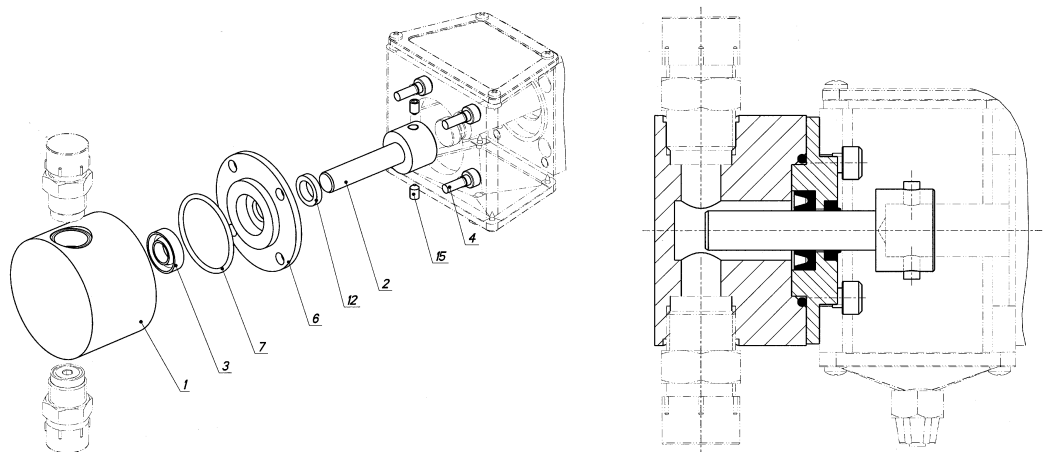
**Modello/ Model A 175N – Pistone/ Piston Ø 64 – CL - A 250N – Pistone/ Piston Ø 54 – 64 – 76 – 89 – CL / A 350N – Piston Ø 89 – CL**



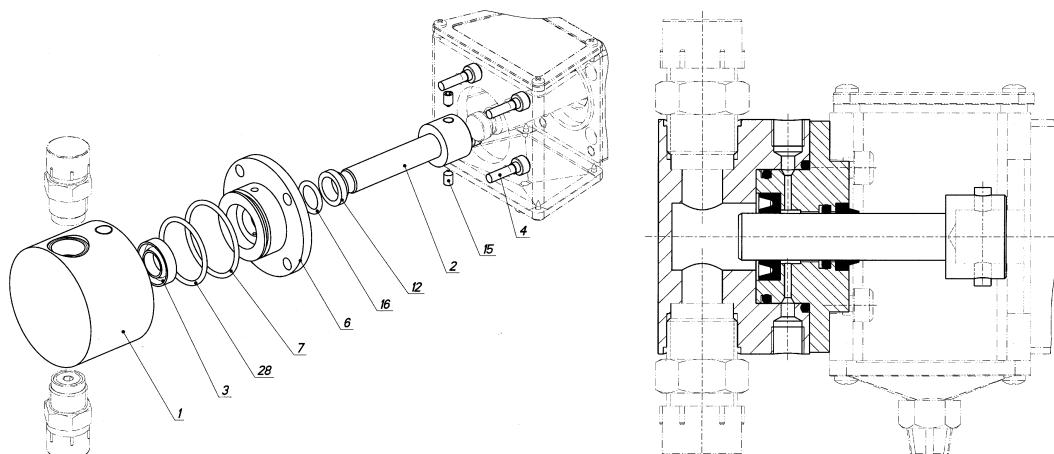
DosingPump.ir

## 2.1 SEZIONI TESTATE IN MATERIALE INOX / PUMP HEAD SECTIONAL DRAWING STAINLESS STEEL MATERIAL

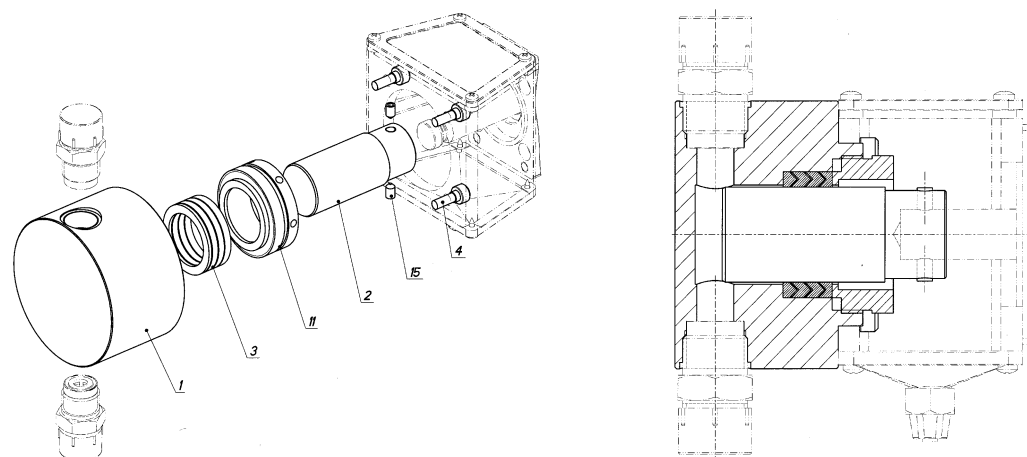
**Modello/ Model A 125N - A175N – Pistone/ Piston Ø 8 - 12 - 14 - 16 – 18 – AP**



**Modello/ Model A 125N - A 175N – Pistone/ Piston Ø 8 - 12 - 14 - 16 – 18 - AP – CL**



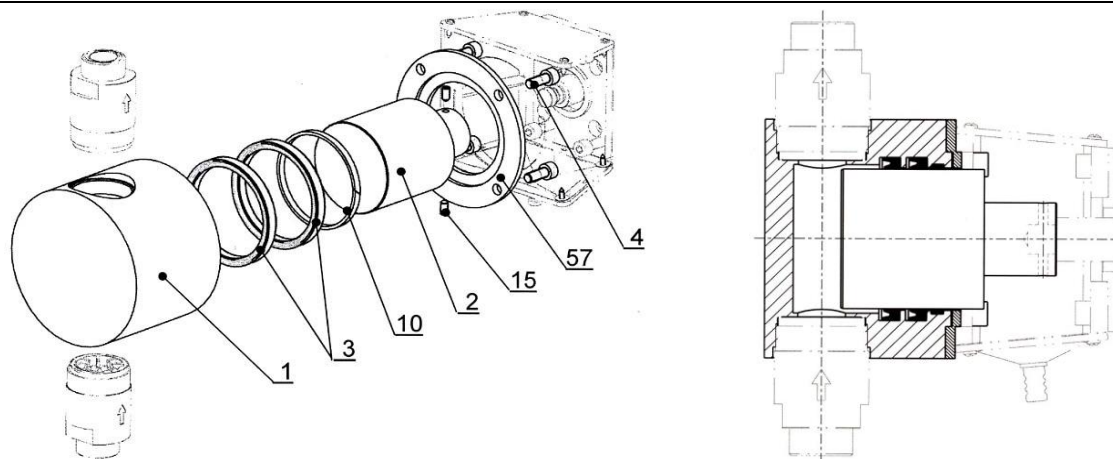
**Modello/ Model A 125N - A 175N – Pistone/ Piston Ø 6 - 11 - 18 - 25 - 30 - 38 - 47 guarnizioni a pacco/ gasket set - A 250N – Pistone/ Piston Ø 30 - 38 – 47 – 54 - 64 guarnizioni a pacco /gasket set**



DosingPump.ir

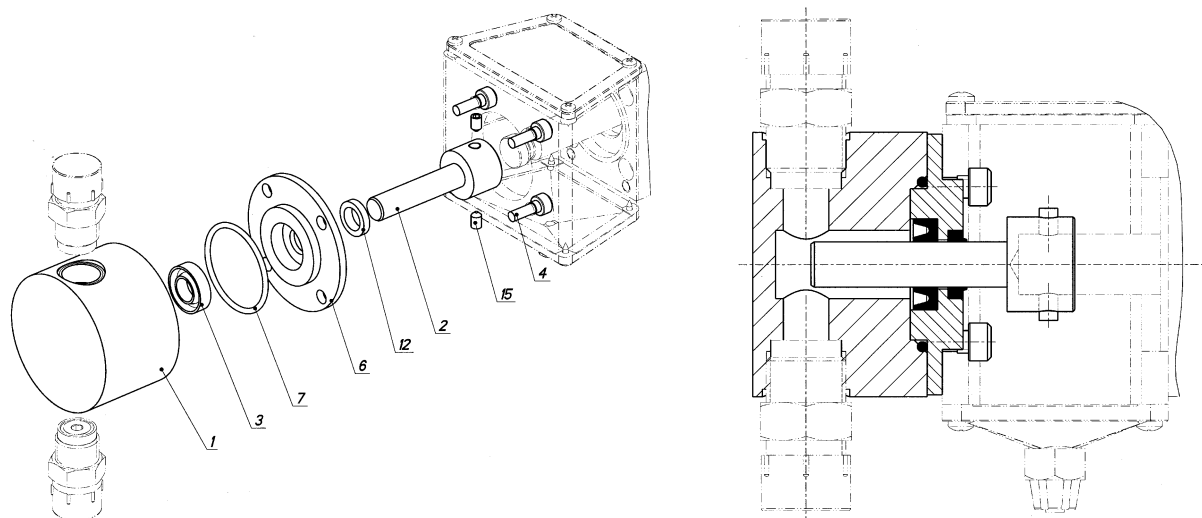
## 2.1 - SEZIONI TESTATE IN MATERIALE INOX / PUMP HEAD SECTIONAL DRAWING STAINLESS STEEL MATERIAL

**Modello/ Model A 250N – Pistone/ Piston Ø 54 – 64 – 76 – 89/ A 350N – Pistone/ Piston Ø 54 – 64 – 76**

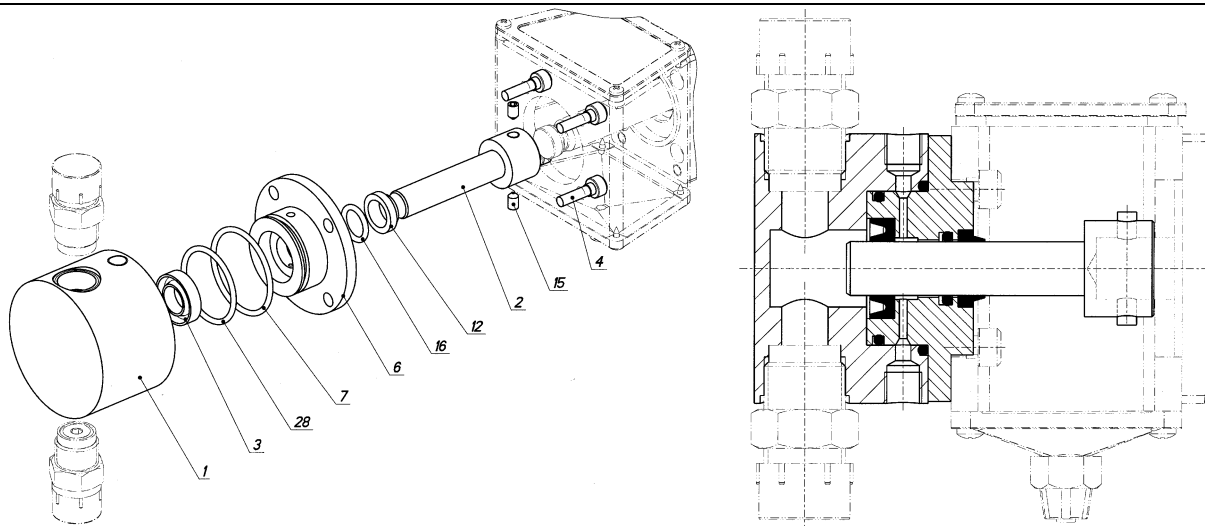


**POS. 57 SOLO PER A 350N/ POS. 57 only for size A 350N**

**Modello/ Model A 250N – Pistone/ Piston Ø 12 - 14 - 16 – 18 - 22 – AP**



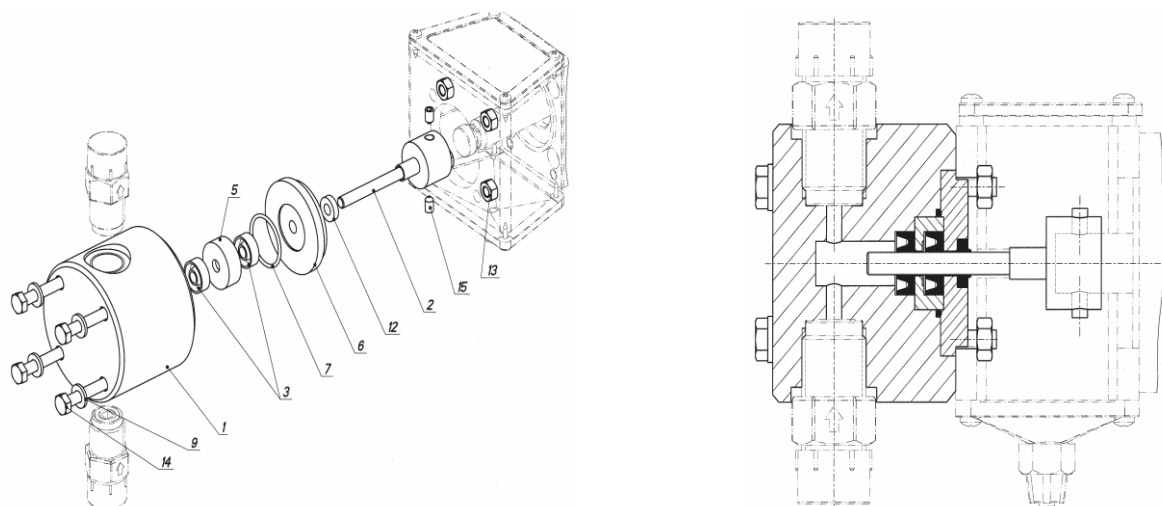
**Modello/ Model A 250N – Pistone/ Piston Ø 12 - 14 - 16 – 18 - 20 - 22 - AP – CL**



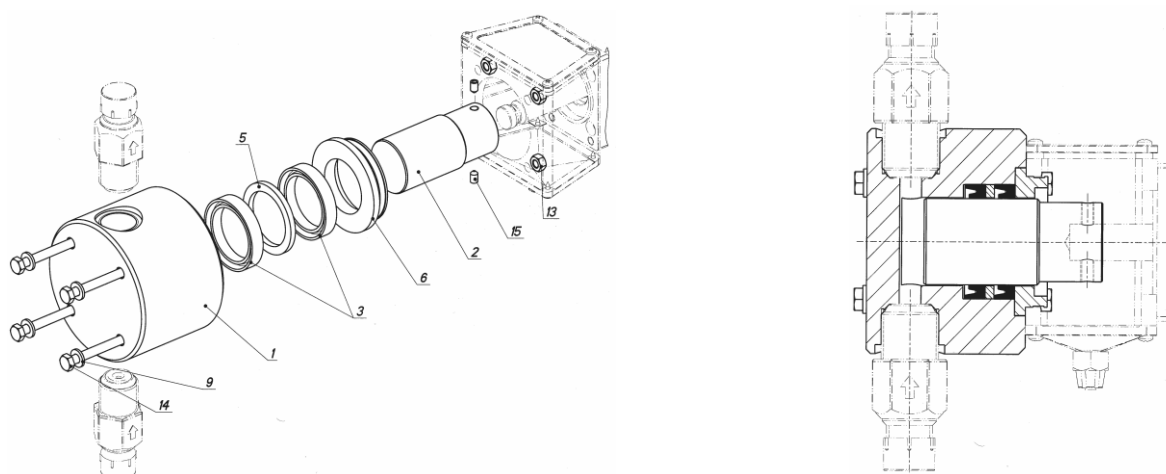
DosingPump.ir

## 2.2 - SEZIONI TESTATE IN MATERIALE PLASTICO / PUMP HEAD SECTIONAL DRAWING PLASTIC MATERIAL

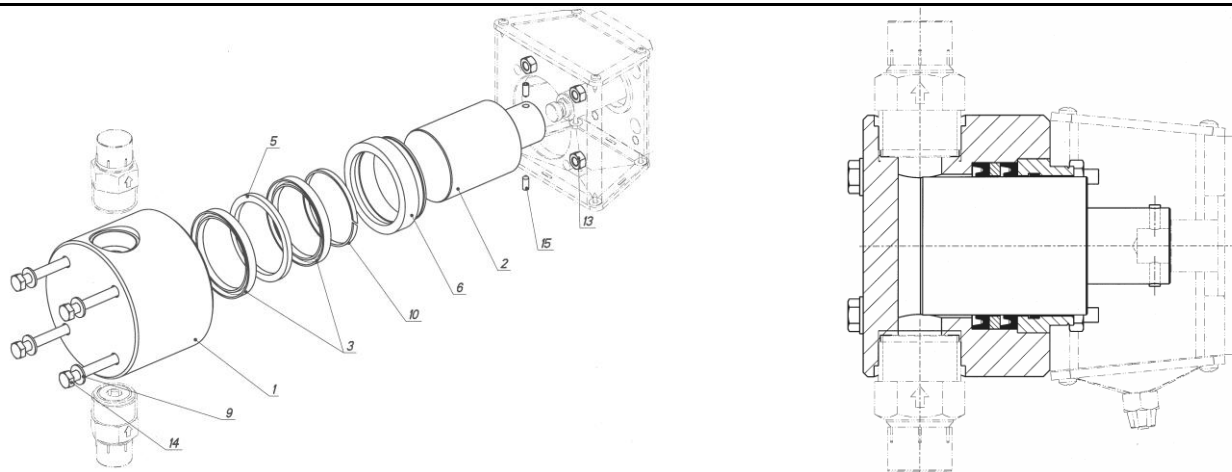
### Modello/ Model A 125N/175N – Pistone/ Piston Ø 6 - 11 - 18



### Modello/ Model A 125N/175N – Pistone/ Piston Ø 25 - 30 - 38 - 47



### Modello/ Model A 175N – Pistone/ Piston Ø 54 – 64 - A 250N – Pistone/ Piston Ø 54 – 64 – 76 – 89/ A 350N – Pistone/ Piston Ø 54 – 64 – 76

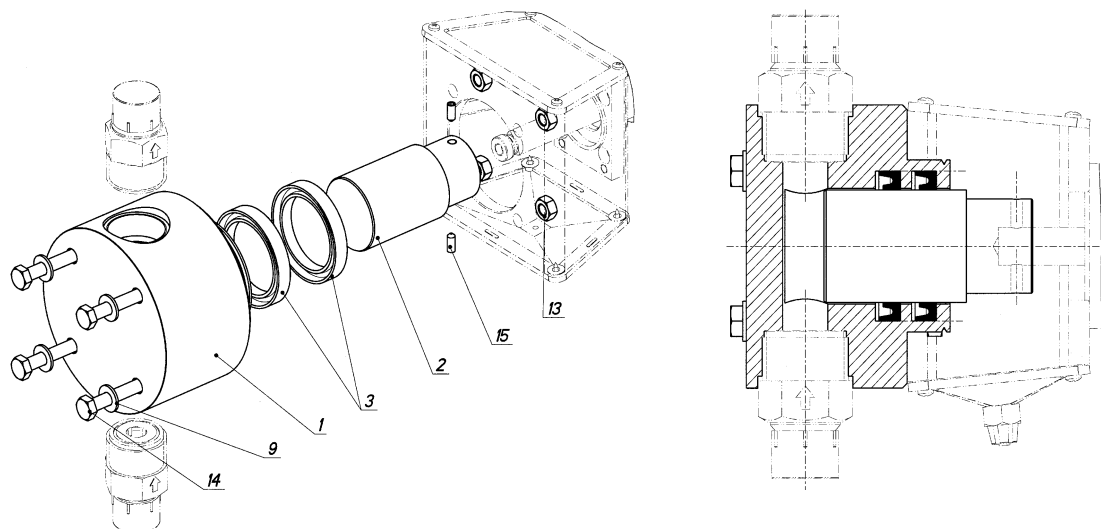


DosingPump.ir

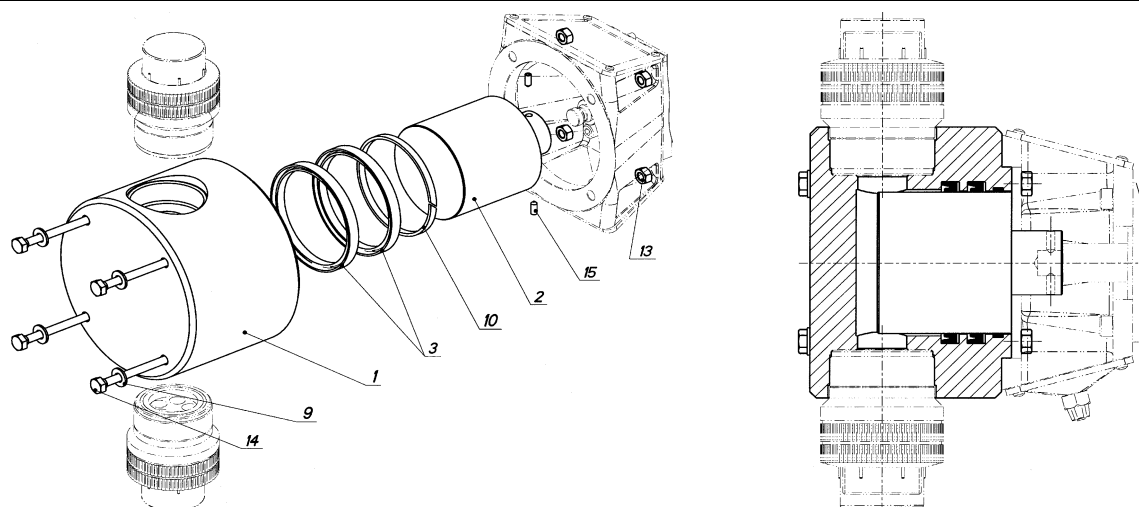


## 2.2 - SEZIONI TESTATE IN MATERIALE PLASTICO / PUMP HEAD SECTIONAL DRAWING PLASTIC MATERIAL

### Modello/ Model A 250N – Pistone/ Piston Ø 47



### Modello/ Model A 350N – Pistone/ Piston Ø 89



DosingPump.ir

<b>2.3 - ELENCO COMPONENTI TESTATA/ PUMP HEAD COMPONENTS LIST</b>				
<b>Pos.</b>	<b>(*)</b>	<b>Q.</b>	<b>Elenco componenti</b>	<b>Parts list</b>
1	(1)	1	Corpo testata	Pump head body
2	(2)	1	Pistone	Piston
3	(3)	1	Serie guarnizione pistone	Piston gasket series
4		4	Vite	Screw
5	(1)	1	Anello intermedio	Gasket spacer ring
6	(1)	1	Anello premiguarnizione	Gasket pressing ring
7	(2)	1	Guarnizione OR	OR Gasket
9		4	Rondella piana	Flat washer
10	(1)	1	Pattino	Skid
11	(1)	1	Ghiera premiguarnizione	Gasket pressing ring nut
12	(1)	1	Anello raschiatore	Scraper ring
13		4	Dado	Nut
14		4	Vite	Screw
15		2	Grano	Grub screw
16	(2)	1	Guarnizione OR	OR Gasket
25	(2)	1	Guarnizione OR	OR Gasket
27	(1)	1	Portaguarnizione	Gasket support
28	(2)	1	Guarnizione OR	OR Gasket
57		1	Anello distanziale testata(solo per A 350N)	Pump head spacer ring
(*) Identificazione e frequenza delle parti soggette a ricambio, <b>(1) = RARAMENTE (2) = POSSIBILE (3) = CERTO/</b> Identification and frequency of parts subject to replacement, <b>(1) = RARELY (2) = POSSIBLE (3) = CERTAIN</b>				

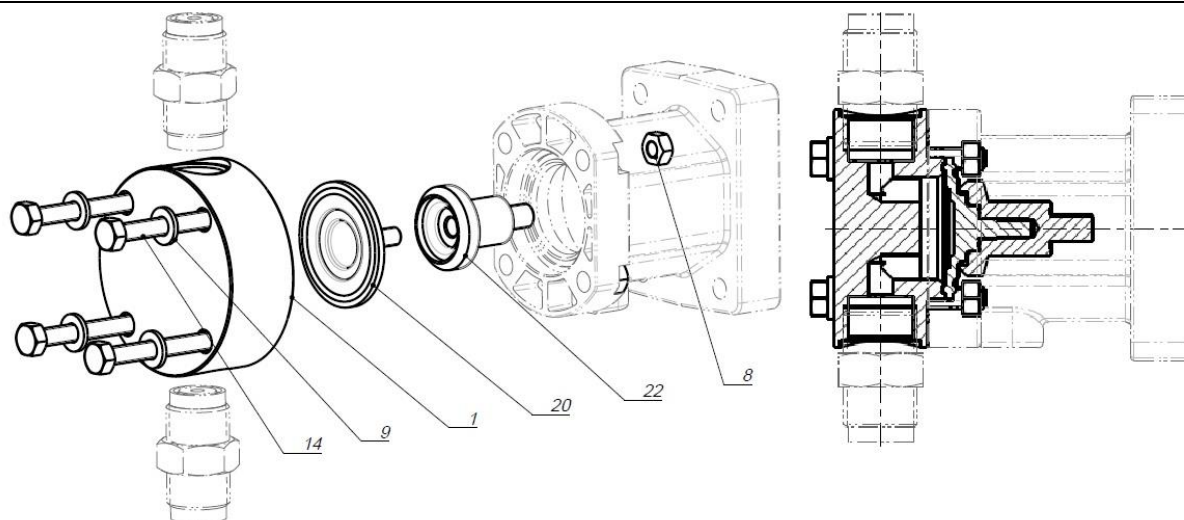
DosingPump.ir

### **3 - SEZIONI TESTATE A MEMBRANA DIRETTA TIPO D/ MECHANICAL DIAPHRAGM HEAD TYPE D SECTIONAL DRAWING**

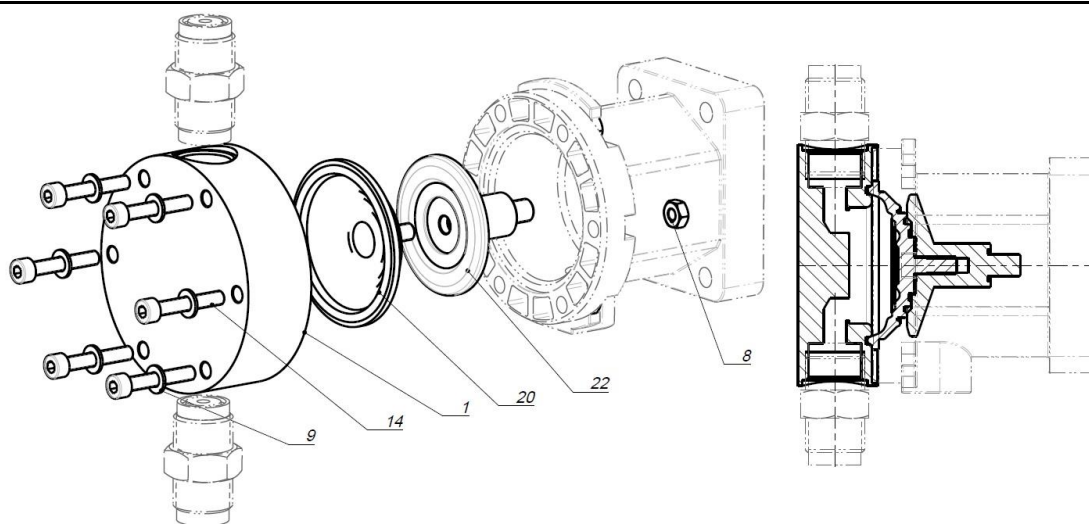
DosingPump.ir

### 3.1 - SEZIONI TESTATE IN MATERIALE INOX / PUMP HEAD SECTIONAL DRAWING STAINLESS STEEL MATERIAL

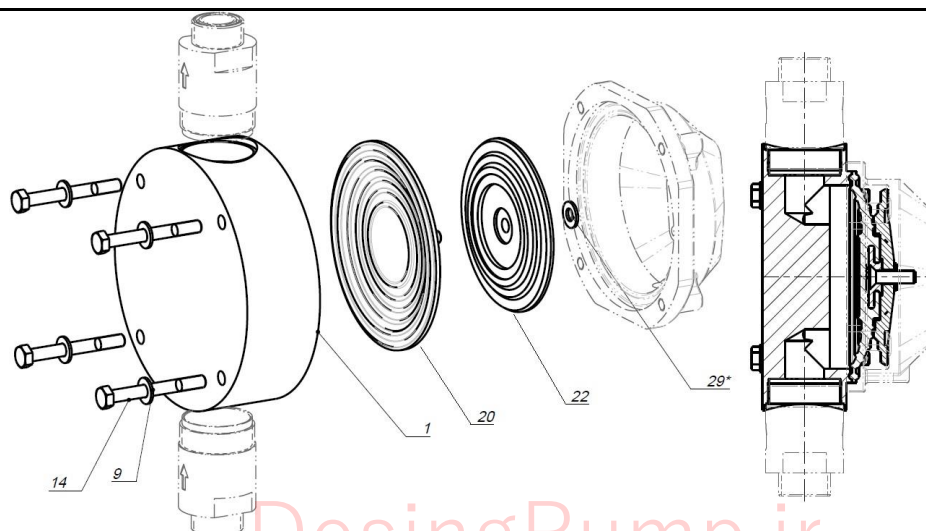
#### Modello/ Model D 050 N -30 INOX



#### Modello/ Model D 050 N -50 INOX



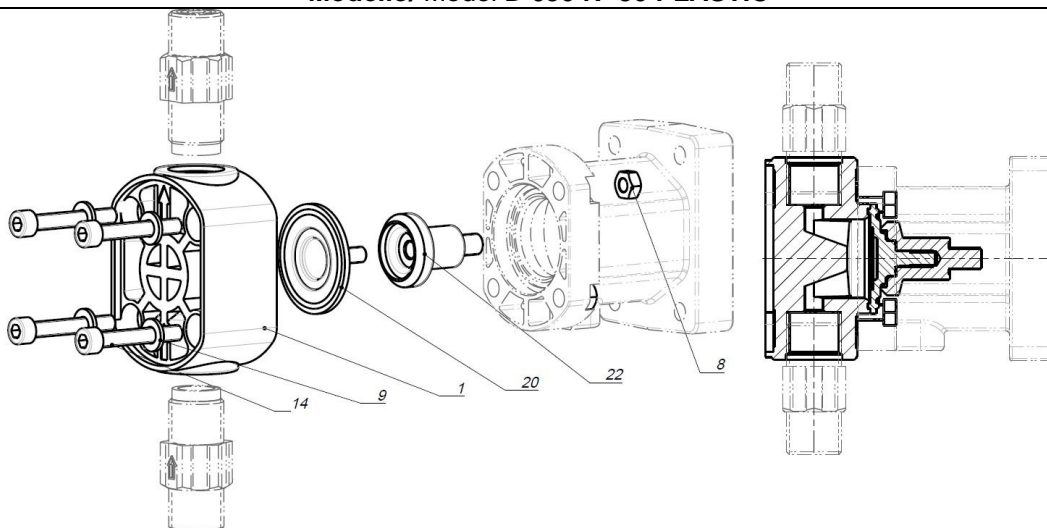
#### Modello/ Model D 100N-D 101N-D 121N Ø 105 - 120 INOX



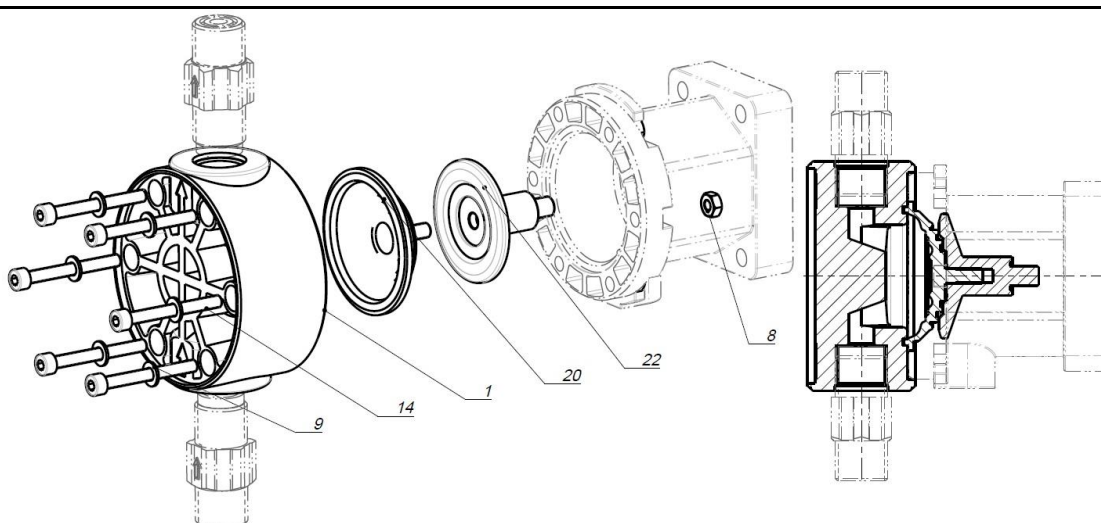
DosingPump.ir

### 3.2 - SEZIONI TESTATE IN MATERIALE PLASTICO / PUMP HEAD SECTIONAL DRAWING PLASTIC MATERIAL

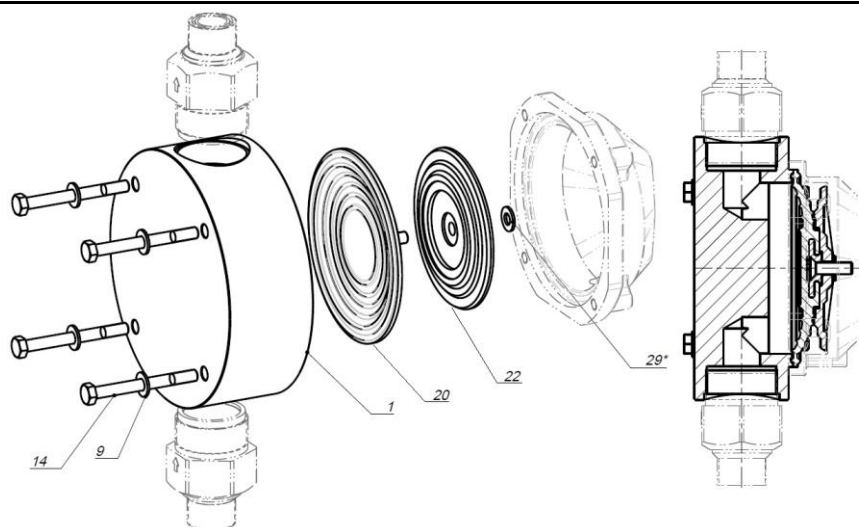
**Modello/ Model D 050 N -30 PLASTIC**



**Modello/ Model D 050 N -50 PLASTIC**



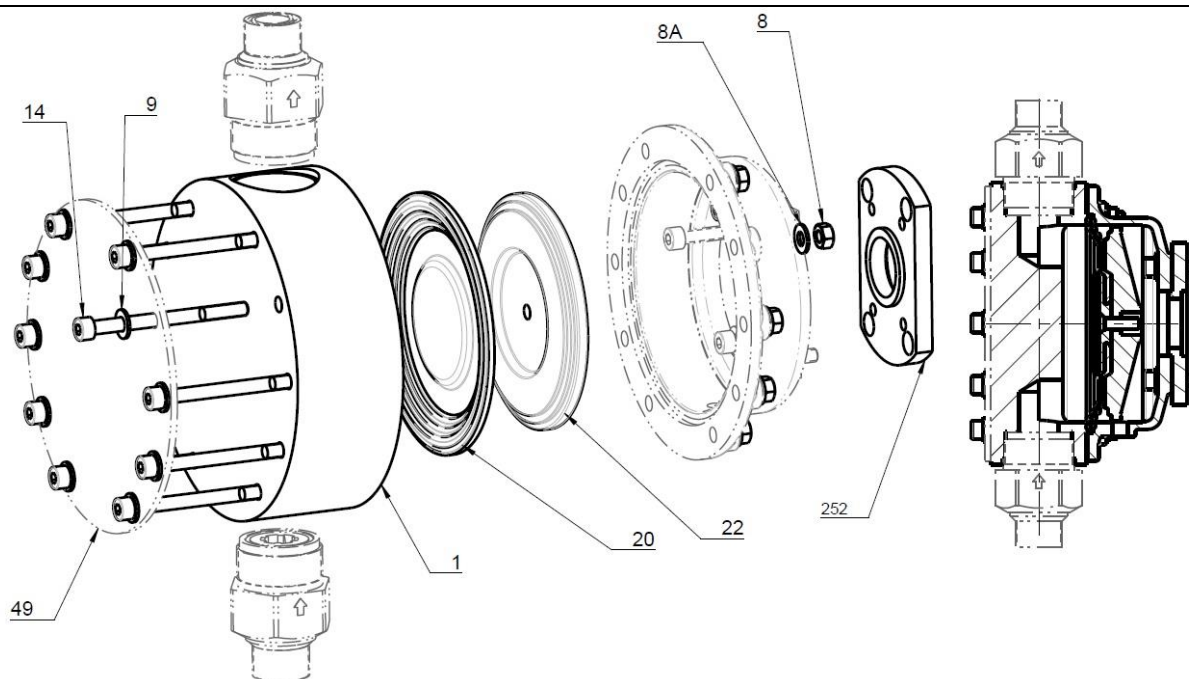
**Modello/ Model D 100N-D 101N-D 121N Ø 105 - 120 PLASTIC**



DosingPump.ir

### 3.3 - SEZIONI TESTATE IN MATERIALE INOX/PLASTICO - PUMP HEAD SECTIONAL DRAWING STAINLESS STEEL/ PLASTIC MATERIAL

Modello/ Model D 122N Ø 140-160



### 3.4 - ELENCO COMPONENTI TESTATA/ PUMP HEAD COMPONENTS LIST

Pos.	(*)	Q.	Descrizione	Parts list
1	(1)	1	Corpo testata	Pump head
7	(1)	1	Guarnizione OR	OR Gasket
8		#	Dado	Nut
8A		#	Rondella piana	Flat washer
9		#	Rondella piana	Flat washer
14	(1)	#	Vite	Screw
20	(3)	1	Membrana	Diaphragm
22	(3)	1	Scudo membrana	Diaphragm shield
29		1	Spessore 2,5 mm solo <b>D 101N</b>	Thickness 2.5 mm only <b>D101N</b>
49		1	Disco di rinforzo(*)	Backing disk
50	(1)	1	Membrana soffiato	Bellow diaphragm

(\*) Identificazione e frequenza delle parti soggette a ricambio, **(1) = RARAMENTE (2) = POSSIBILE (3) = CERTO**  
Identification and frequency of parts subject to replacement, **(1) = RARELY (2) = POSSIBLE (3) = CERTAIN**

**N.B.:** # A seconda del modello e della grandezza/ Depending on the model and size

(\*) Pos.49 solo per versione in plastica/ Only for plastic version

DosingPump.ir



**4- SEZIONI TESTATE A MEMBRANA  
IDRAULICA TIPO B/ HYDRAULIC DIAPHRAGM  
HEAD TYPE B SECTIONAL DRAWING**

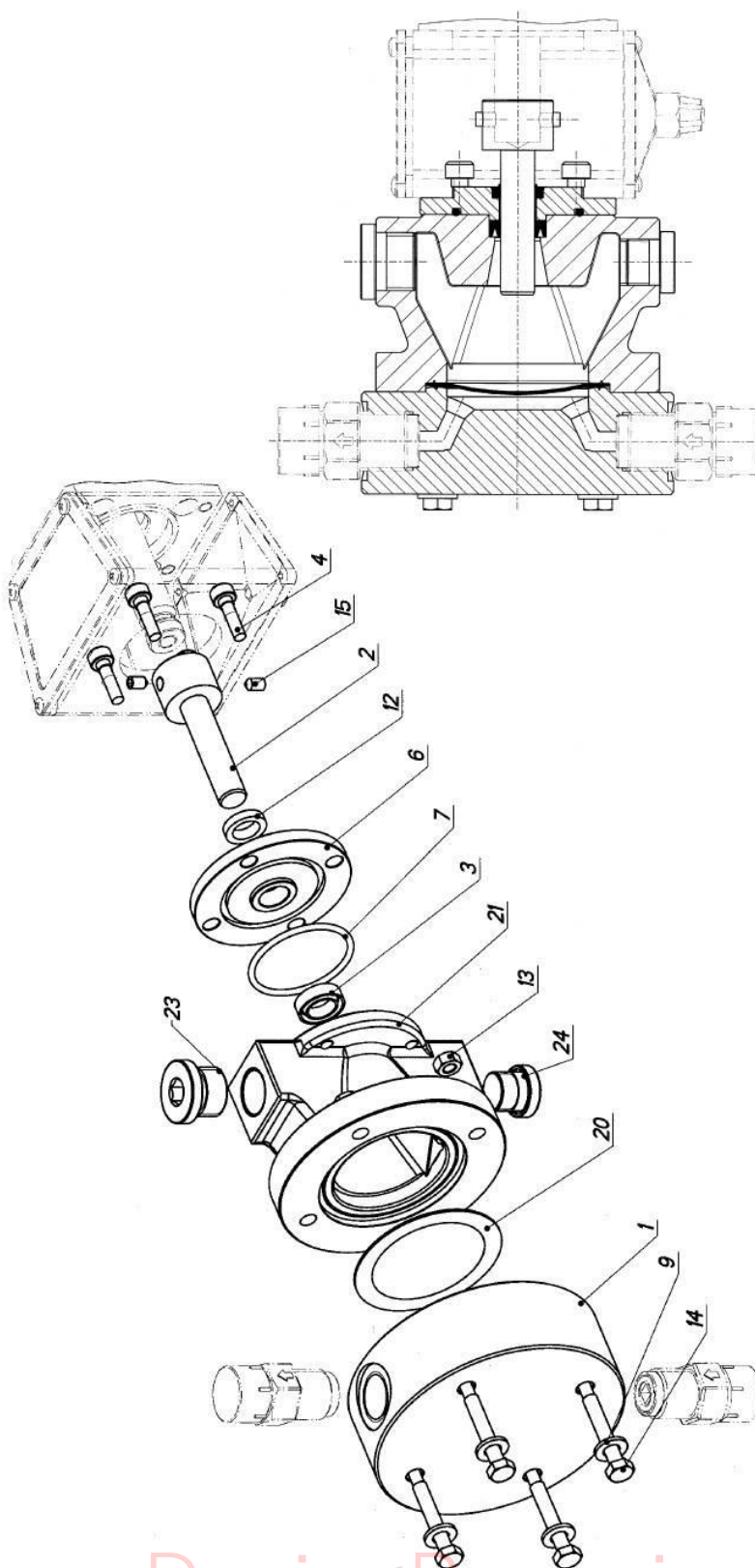
DosingPump.ir

#### 4.1 - SEZIONI TESTATE IN MATERIALE INOX/ PLASTICO PUMP HEAD SECTIONAL DRAWING STAINLESS STEEL/ PLASTIC MATERIAL

**Modello/ Model B125N – B 175N Ø 8-12-18-25-30-40-55-65 – B 250N Ø 65-75-85-90**

Il numero di viti cambia in base alla grandezza della pompa.

The number of screws changes depending on the size of the pump.

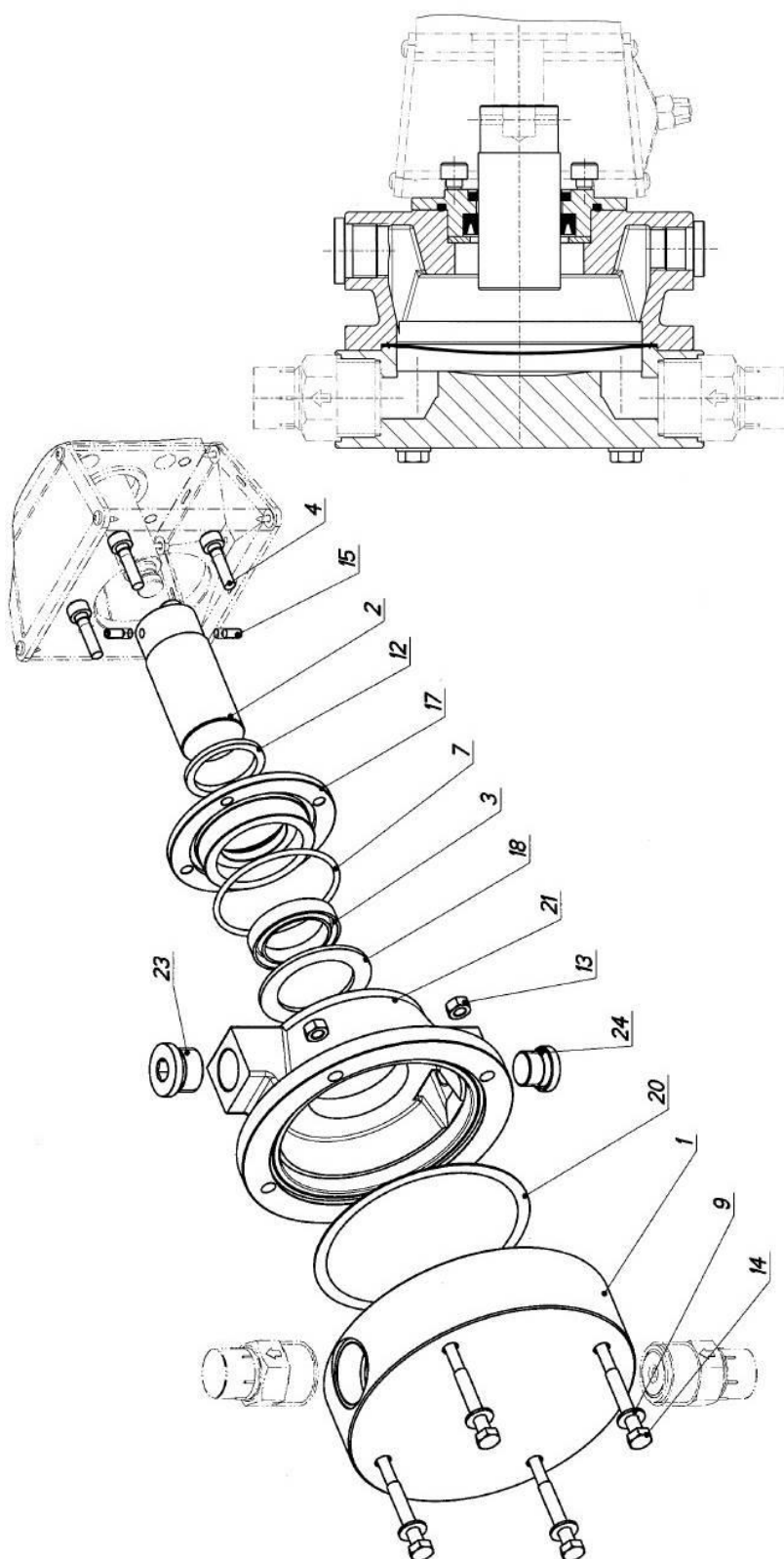


DosingPump.ir

**4.1 - SEZIONI TESTATE IN MATERIALE INOX/ PLASTICO PUMP HEAD SECTIONAL DRAWING**  
**STAINLESS STEEL/ PLASTIC MATERIAL**

**Modello/ Model B 250N Ø 40-50-55**

Pos 18: ammissibile solo per pompe B250N diam. 40  
Ammissible only for pumps B250N



DosingPump.ir

4.2 - ELENCO COMPONENTI TESTATA/ PUMP HEAD COMPONENTS LIST				
Pos.	(*)	Q.	Elenco componenti	Parts list
1	(1)	1	Corpo testata	Pump head
2	(2)	1	Pistone	Piston
3	(3)	1	Guarnizione pistone	Piston gasket
4		4	Vite	Screw
6	(1)	1	Anello premiguarnizione	Stuffing box
7	(2)	1	Guarnizione OR	OR Gasket
9		4	Rondella piana	Flat washer
12	(1)	1	Anello raschiatore	Scraper ring
13		4	Dado	Nut
14		4	Vite	Screw
15		2	Grano	Grub screw
17	(1)	1	Anello premiguarnizione ridotto	Stuffing box
18	(1)	1	Anello di fermo	Ring
20	(2)	1	Membrana	Diaphragm
21	(1)	1	Camera olio	Oil chamber
23		1	Tappo carico olio	Oil filling plug
24		1	Tappo scarico olio	Oil discharging chamber
(*) Identificazione e frequenza delle parti soggette a ricambio, (1) = RARAMENTE (2) = POSSIBILE (3) = CERTO/ Identification and frequency of parts subject to replacement, (1) = RARELY (2) = POSSIBLE (3) = CERTAIN				

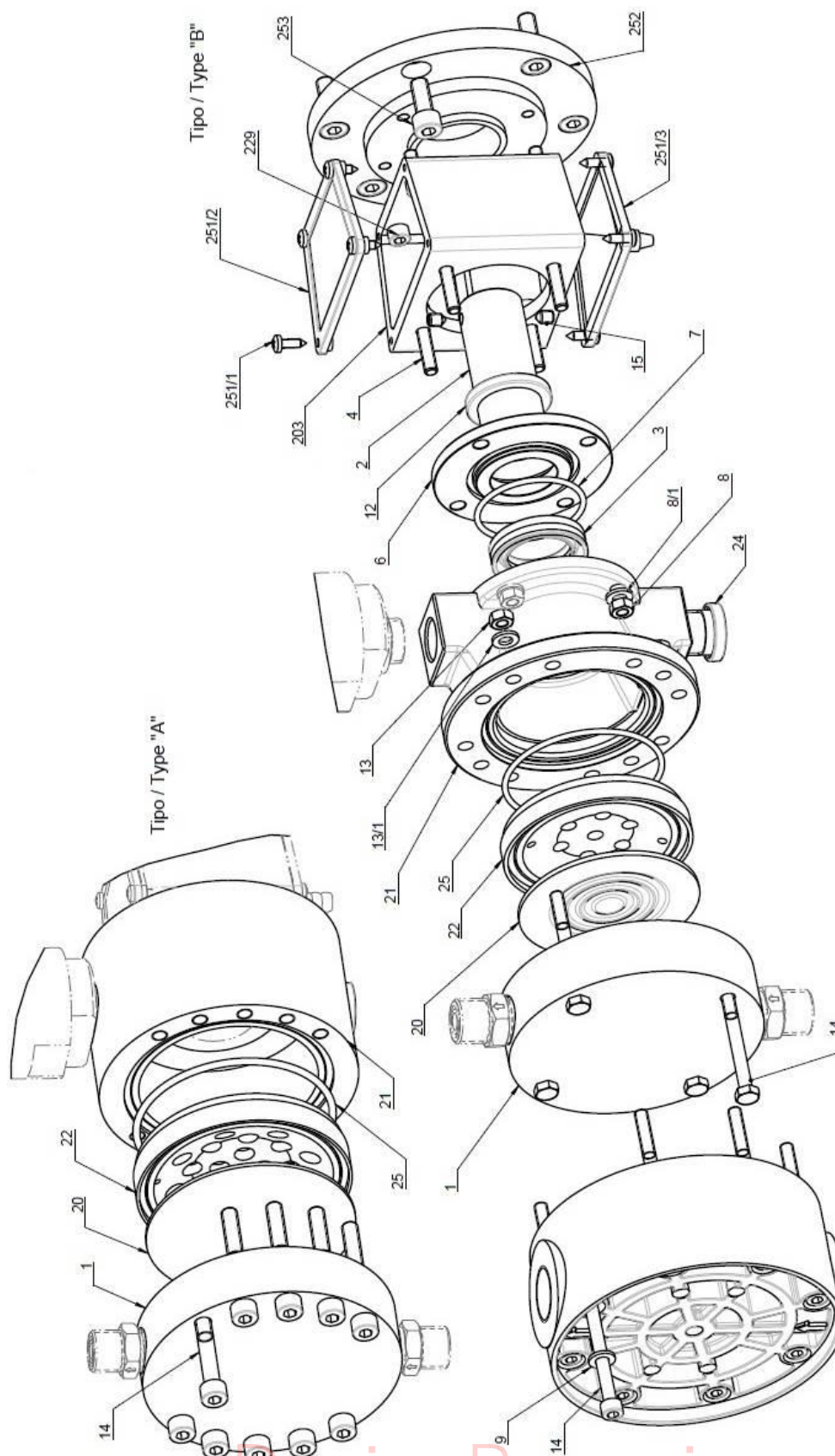
DosingPump.ir

**5 - SEZIONI TESTATE A MEMBRANA  
IDRAULICA TIPO BR/ HYDRAULIC DIAPHRAGM  
HEAD TYPE BR SECTIONAL DRAWING**

DosingPump.ir

**5.1 - SEZIONI TESTATE IN MATERIALE INOX/PLASTICO - PUMP HEAD SECTIONAL DRAWING**  
**STAINLESS STEEL/ PLASTIC MATERIAL**

**Modello/ Model** BR 125 N-BR 175N Ø 8-12-25-30-40-50 **BR 250N** Ø 65/75/90





## 5.2 - ELENCO COMPONENTI TESTATA/ PUMP HEAD COMPONENTS LIST

Pos.	(*)	Q.	Descrizione	Parts list
1	(a)	1	Corpo testata	Pump head
2	(b)	1	Pistone	Piston
3	(c)	1	guarnizione pistone	Gasket piston
4		4	Vite	Screw
6	(a)	1	Anello premiguarnizione	Stuffing box
7	(b)	1	Guarnizione OR	OR-Ring gasket
8		4	Dado	Nut
8/1		4	Rondella piana	Flat washer
9	(2)	8	Rondella piana	Flat washer
12	(a)	1	Anello raschiatore	Scraper ring
13	(2)(3)	4/6/8/10	Dado	Nut
13/1	(2)(3)	4/6/8/10	Rondella	Washer
14	(b) (2)(3)	4/6/8/10	Vite	Screw
15		2	Grano	Grub screw
20	(c)	1	Membrana	Diaphragm
21		1	Camera olio	Oil reservoir
22		1	Scudo membrana posteriore	Rear diaphragm shield
24	(a)	1	Tappo scarico olio	Oil discharging plug
25	(b)	1	Guarnizione OR	OR-Ring gasket
203			Lanterna portatestata	Head lantern
229		4	Vite	Screw
251/1		8	Vite	Screw
251/2		1	Coperchio "CE"	"CE" cover
251/3		1	Coperchio "CE"	"CE" cover
252	(1)	1	Flangia di adattamento	Adapting flange
253	(1)	6	Vite	Screw
NOTE				
(1)	Solo per 250/ only for 250			
(2)	Solo per versione in plastica (N°8)/ only for plastic version (N°8)			
(3)	N°6/10 per TIPO "A" – N°6/10 for TYPE "A" N°4 per TIPO "B" – N° 4 for TYPE "B"			
(*) Identificazione e frequenza delle parti soggette a ricambio, (a) = RARAMENTE (b) = POSSIBILE (c) = CERTO/ Identification and frequency of parts subject to replacement, (a) = RARELY (b) = POSSIBLE (c) = CERTAIN				

DosingPump.ir

DosingPump.ir

**6 - SEZIONI TESTATE A MEMBRANA  
IDRAULICA TIPO SD/ HYDRAULIC DIAPHRAGM  
HEAD TYPE SD SECTIONAL DRAWING**

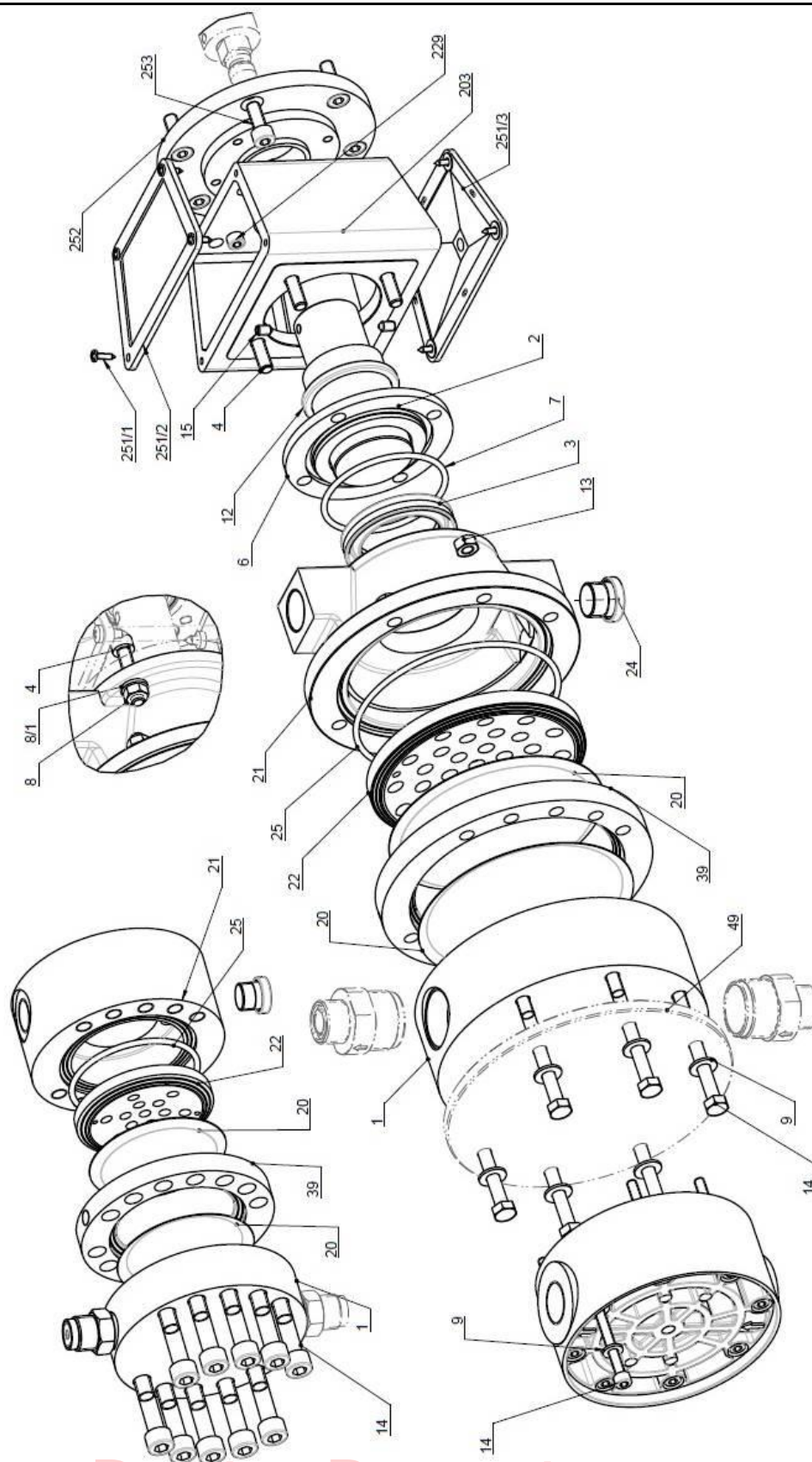
DosingPump.ir

# 6.1 - SEZIONI TESTATE IN MATERIALE INOX/ PLASTICO - PUMP HEAD SECTIONAL DRAWING STAINLESS STEEL/ PLASTIC MATERIAL

Modello/ Model **SD 125N** Ø 8 to 40 – **SD 175N** Ø 8 to 65 – **SD 250N** Ø 8 to 110

Tipo / Type "A"

Camera idraulica acciaio  
(pos. 21) – versione alta  
pressione. Iron hydraulic  
chamber (pos. 21) – high  
pressure version



DosingPump.ir

## 6.2 - ELENCO COMPONENTI TESTATA/ PUMP HEAD COMPONENTS LIST

Pos.	(*)	Q.	Descrizione	Parts list
1	(a)	1	Corpo testata	Pump head
2	(b)	1	Pistone	Piston
3	(c)	1	guarnizione pistone	Gasket piston
4		4	Vite	Screw
6	(a)	1	Anello premiguarnizione	Stuffing box
7	(b)	1	Guarnizione OR	OR-Ring gasket
8		4	Dado	Nut
8/1		4	Rondella piana	Flat washer
9	(3)	4/6/10	Rondella piana	Flat washer
12	(a)	1	Anello raschiatore	Scraper ring
13		4/6/8/10 (2) (3)	Dado	Nut
14	(a)	4/6/8/10 (2) (3)	Vite	Screw
15		2	Grano	Grub screw
20	(c)	1	Membrana	Diaphragm
21		1	Camera olio	Oil reservoir
22		1	Scudo membrana posteriore	Rear diaphragm shield
24	(a)	1	Tappo scarico olio	Oil discharging plug
25	(b)	1	Guarnizione OR	OR-Ring gasket
39		1	Anello separatore	Diaphragm ring
49	(2)	1	Disco di rinforzo	Backing disk
203		1	Lanterna portatestata	Head lantern
229		4	Vite	Screw
251/1		8	Vite	Screw
251/2		1	Coperchio "CE"	"CE" cover
251/3		1	Coperchio "CE"	"CE" cover
252	(1)	1	Flangia di adattamento	Adapting flange
253	(1)	6	Vite	Screw

### NOTE

- |     |                                                                                       |
|-----|---------------------------------------------------------------------------------------|
| (1) | Solo per I 250/ Only for I 250                                                        |
| (2) | Solo per versione in plastica e su richiesta/ On request and only for plastic version |
| (3) | N°4/6 per TIPO "A" – N°4/6 for TYPE "A"<br>N° 10 per TIPO "B" – N°10 for TYPE "B"     |

(\*) Identificazione e frequenza delle parti soggette a ricambio, **(a) = RARAMENTE (b) = POSSIBILE (c) = CERTO/**  
Identification and frequency of parts subject to replacement, **(1) = RARELY (2) = POSSIBLE (3) = CERTAIN**

DosingPump.ir

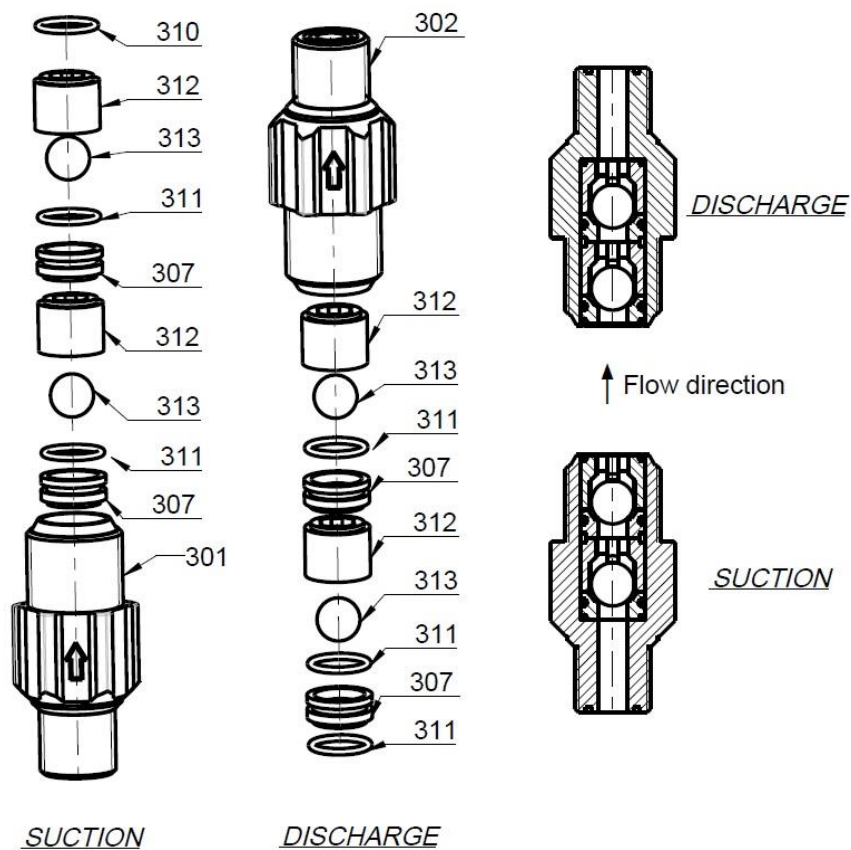


## **7 - SEZIONI VALVOLE/ VALVE SECTIONAL DRAWING**

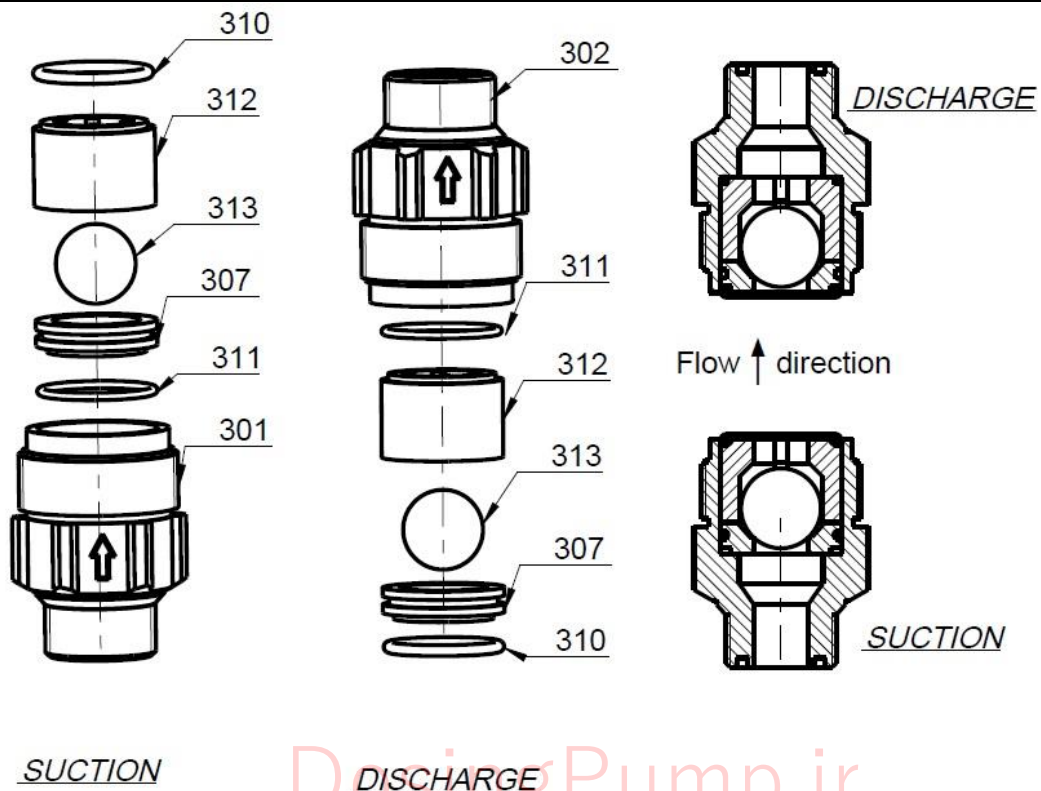
DosingPump.ir

# 7.1 - SEZIONE VALVOLE IN MATERIALE PLASTICO/ VALVE SECTIONAL DRAWING PLASTIC MATERIAL

## Valvola/ Valve AC 3 - 5 - 8 DV

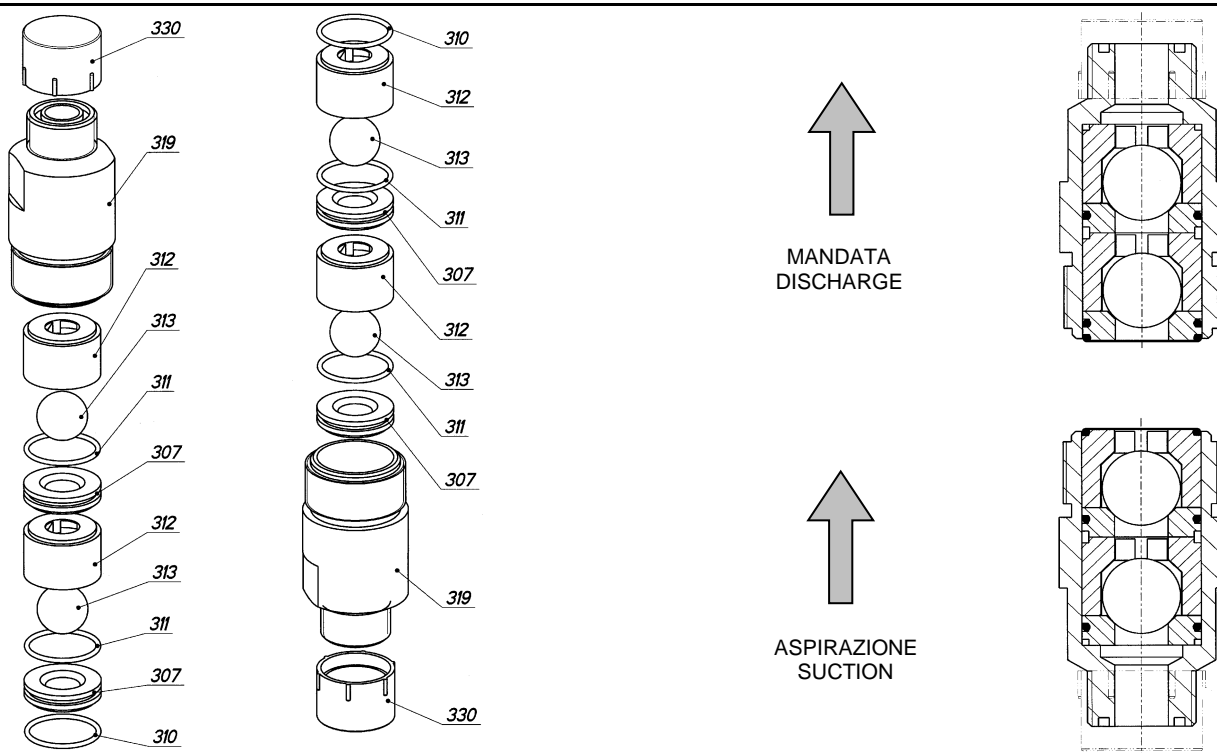


## Valvola/ Valve AC 11 - 13

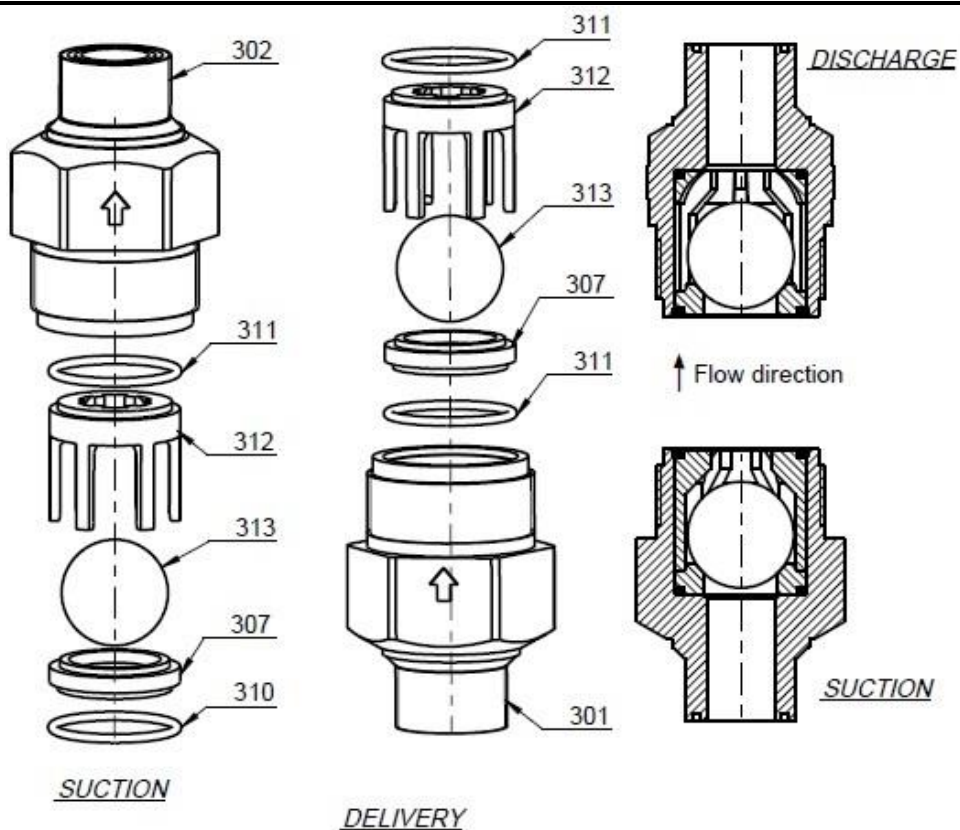


## 7.1 - SEZIONE VALVOLE IN MATERIALE PLASTICO/ VALVE SECTIONAL DRAWING PLASTIC MATERIAL

### Valvola/Valve AC 13 DV



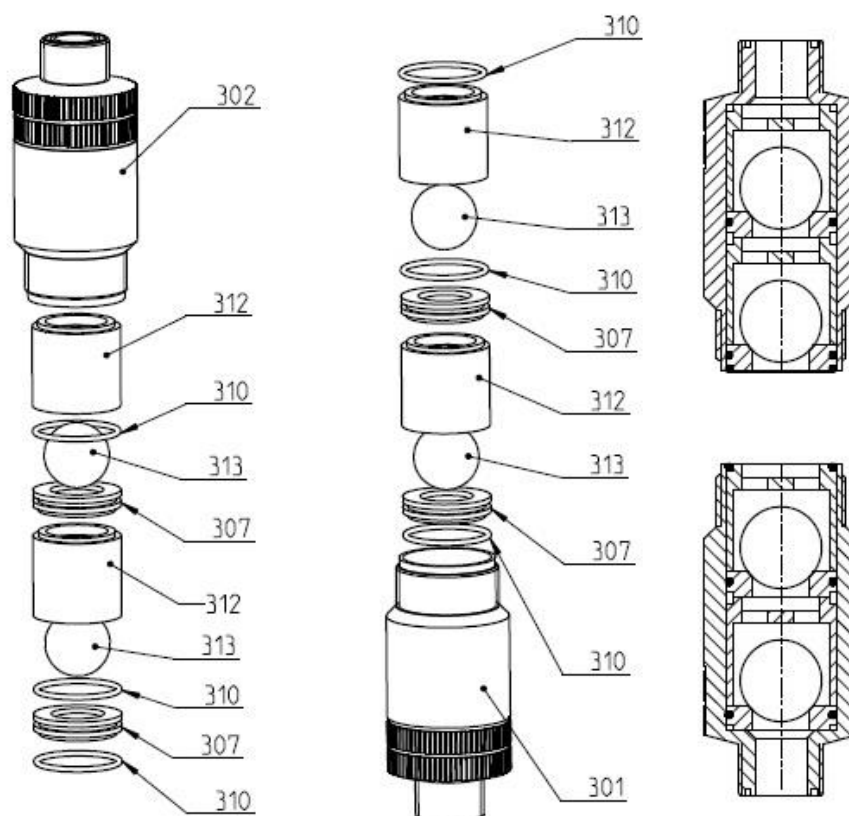
### Valvola/ Valve AC 17-22



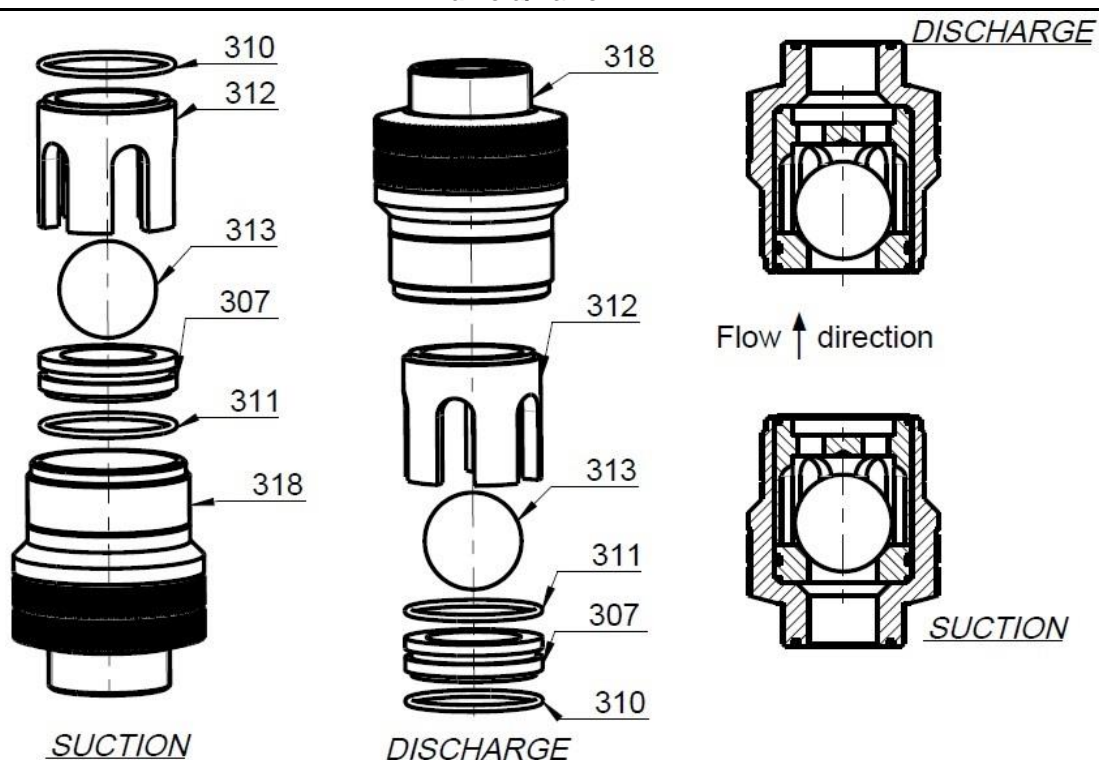
DosingPump.ir

# 7.1 - SEZIONE VALVOLE IN MATERIALE PLASTICO/ VALVE SECTIONAL DRAWING PLASTIC MATERIAL

## Valvola/ Valve AC 17 – 22 DV



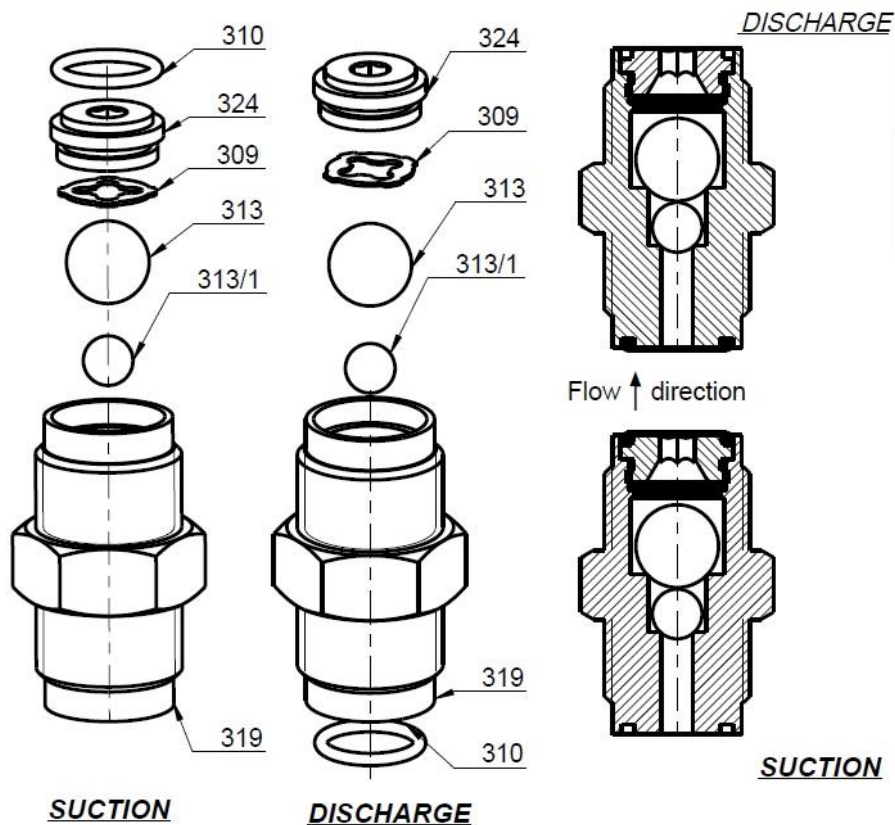
## Valvola/Valve AB 27



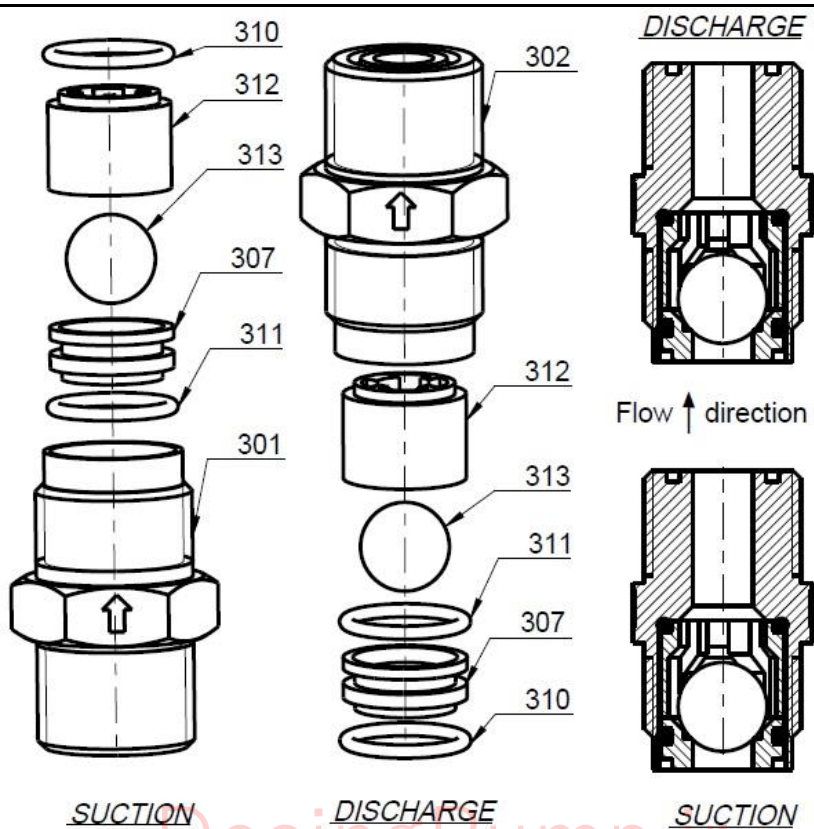
DosingPump.ir

**7.2 - SEZIONE VALVOLE IN MATERIALE INOX/ VALVE SECTIONAL DRAWING STAINLESS STEEL MATERIAL**

**Valvola/Valve AB 3 – 5**



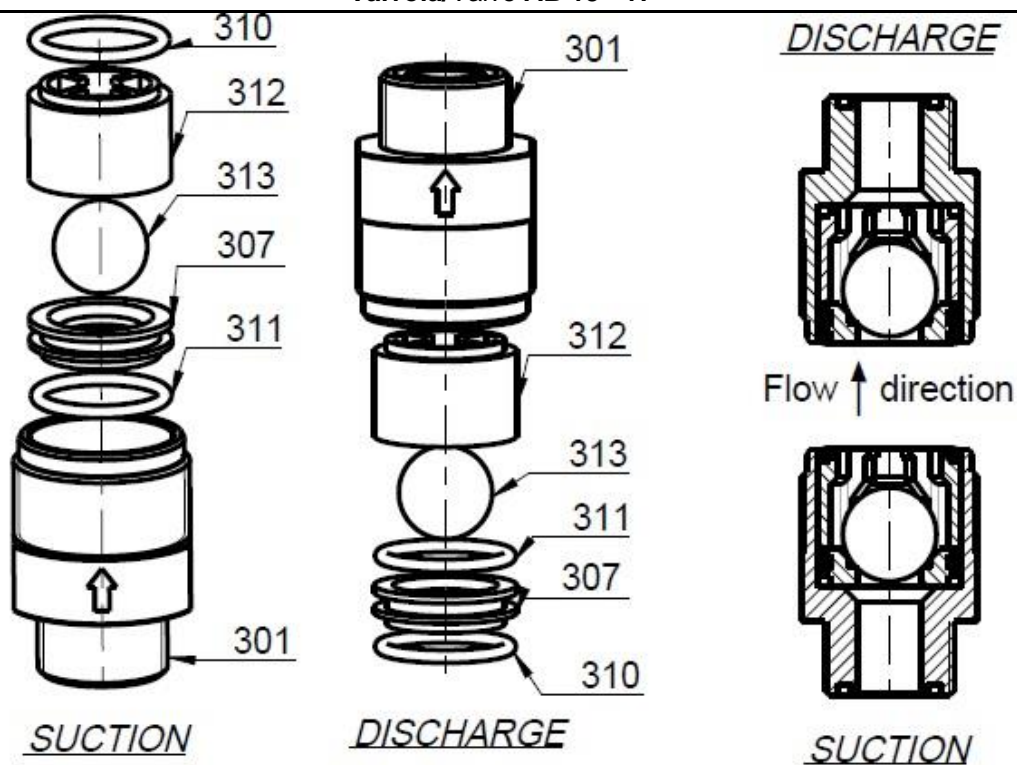
**Valvola/Valve AB 8**



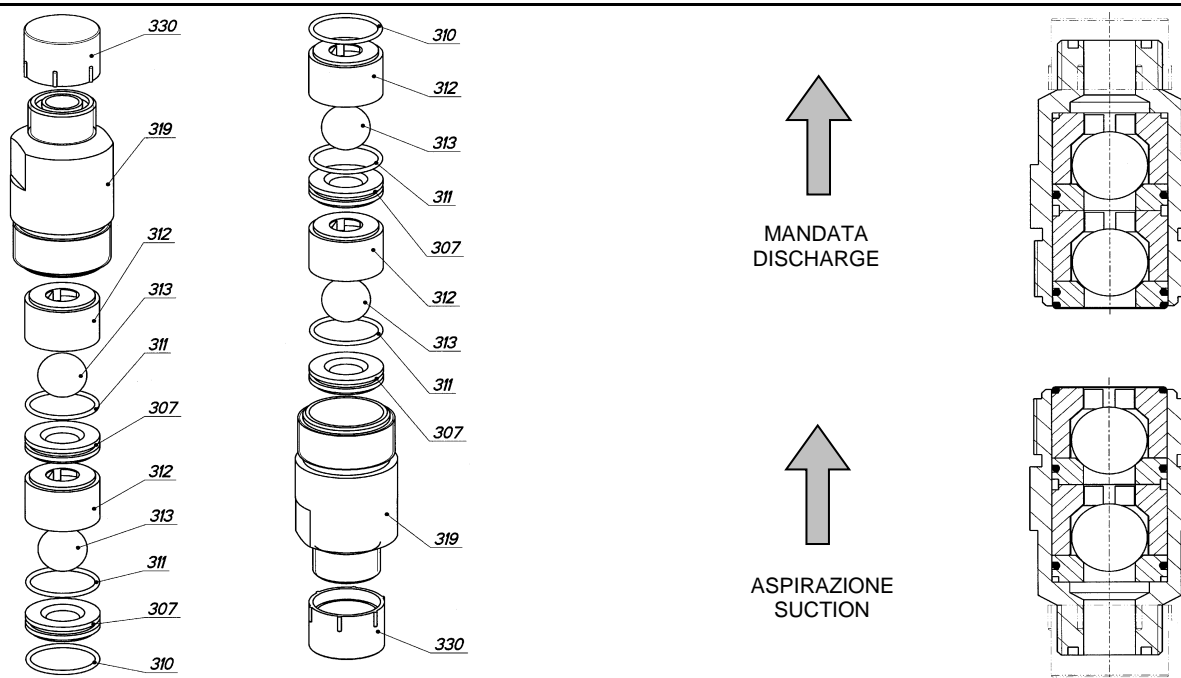


## 7.2 - SEZIONE VALVOLE IN MATERIALE INOX/ VALVE SECTIONAL DRAWING STAINLESS STEEL MATERIAL

Valvola/Valve AB 13 - 17



Valvola/ Valve AB 8 – 13 DV

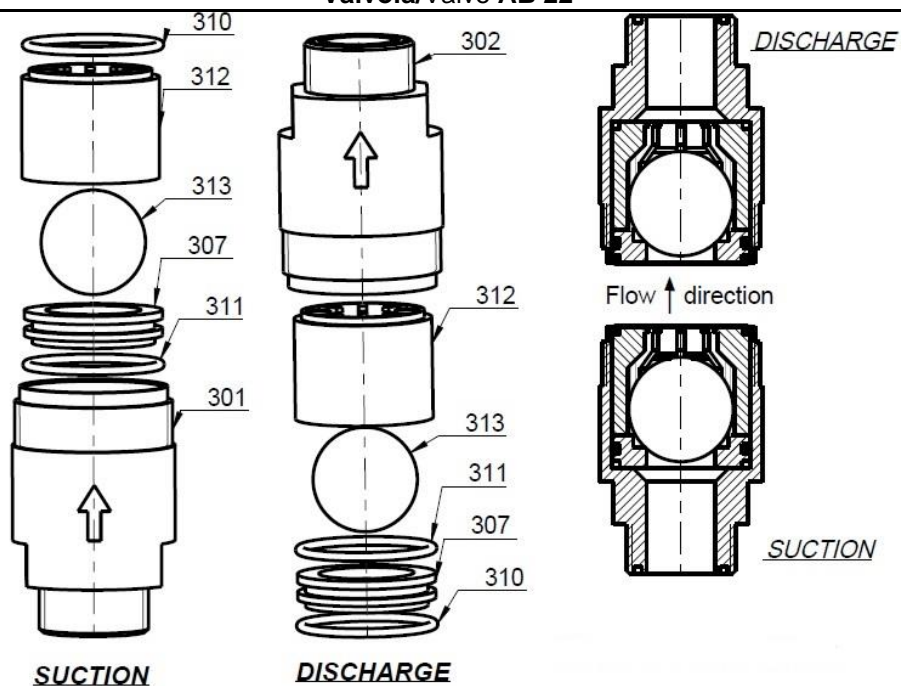


DosingPump.ir

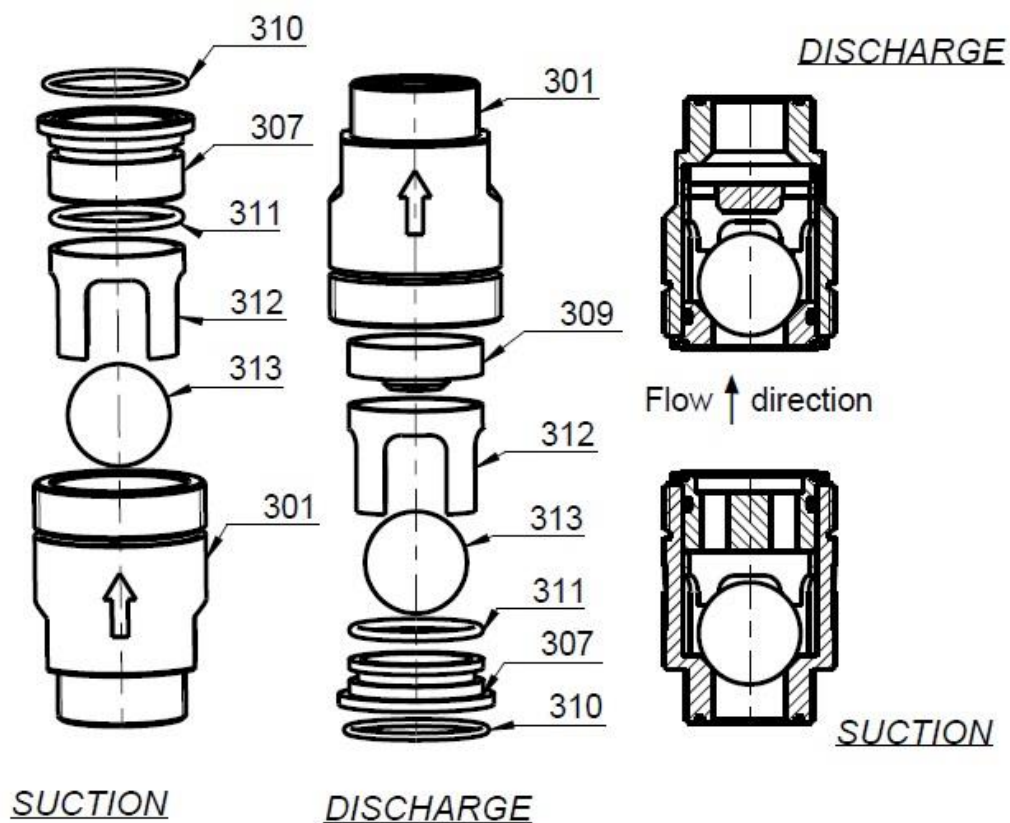


**7.2 - SEZIONE VALVOLE IN MATERIALE INOX/ VALVE SECTIONAL DRAWING STAINLESS STEEL MATERIAL**

**Valvola/Valve AB 22**



**Valvola/ Valve AB 27**



7.3 - ELENCO COMPONENTI VALVOLE/ VALVE COMPONENTS LIST				
Pos.	(*)	Q.	Descrizione	Parts list
301	(3)	1	Contenitore di aspirazione	Suction housing
302	(3)	1	Contenitore di mandata	Discharge housing
307	(3)	1(A)	Sede valvola	Valve seat
309	(3)	1	Limitatore d'alzata	Limit lift
310	(3)	1	Guarnizione OR	OR gasket
311	(3)	1(A)	Guarnizione OR	OR gasket
312	(3)	1(A)	Guida valvola	Valve guide
313	(3)	1(A)	Sfera	Ball
313/1	(3)	1	Sfera	Ball
318	(3)	1	Contenitore singola valvola	single valve housing
319	(2)	1	Contenitore doppia valvola	Double valve housing
324	(3)	1	Supporto guarnizione	Gasket support
330	(3)	1	Tappo di protezione	Protection cap
(*) Identificazione e frequenza delle parti soggette a ricambio, <b>(1) = RARAMENTE (2) = POSSIBILE (3) = CERTO/</b> Identification and frequency of parts subject to replacement, <b>(1) = RARELY (2) = POSSIBLE (3) = CERTAIN</b> (A): 2 PER ESECUZIONE DV/2 FOR DV EXECUTION				

DosingPump.ir

DosingPump.ir

Per un migliore utilizzo della Vs. pompa dosatrice scegliete gli:

**ACCESSORI DOSEURO<sub>S.r.l.</sub>**

Richiedeteli al Ns. Ufficio Commerciale

*For a better use of your metering pump, choose:*

**DOSEURO<sub>S.r.l.</sub> ACCESSORIES.**

*Request them to our Sales Department*



Via G. Carducci, 141 - 20093 Cologno Monzese (Mi) - Italy

Tel. +39 0227301324 - Fax. +39 0226700883

[http:// www.doseuro.com](http://www.doseuro.com)

e-mail: [info@fpz.com](mailto:info@fpz.com)