

Water Treatment



TAURUS-TP/TM.INV

ELECTROMECHANICAL DOSING PUMPS



Main characteristics

- **PISTON/DIAPHRAGM DOSING PUMPS WITH ASSEMBLED INVERTER**
- **SS316 and PVC (TAP), SS316 and PP (TAM) pump head**
- **Piston Seal is lip automatic type**
- **Max Dosing Temperature 90°C (SS) , 40°C (PP)**
- **As standard the Pump can be Regulated Manually but it can also be coupled to a Remote Signal, through an Electrical Servo-control with 4÷20 mA signal**
- **Asynchronous three-phase motor, IP54 protection, axial servo-venting IC06. Inverter module, pre-installed, ALITAIR-M037 motor, "/B" version, 1 analogic input, 4÷20 mA, 4 digital inputs, 1 serial RS485 input for programming and calibration.**

Dosing Pump.it



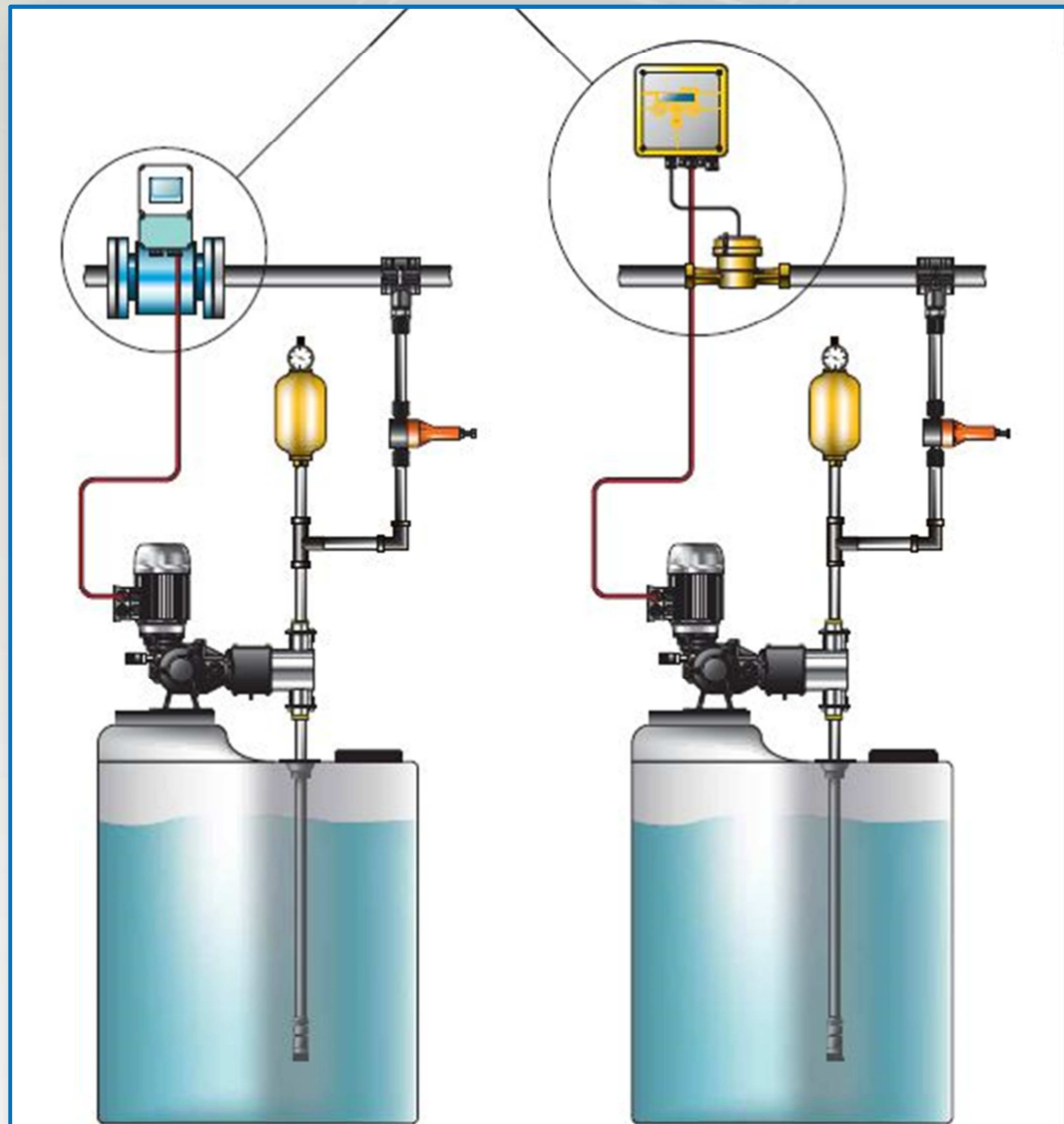
INJECTA
the perfect dosing

Water Treatment



Example of installation

Flow measure through electromagnetic flow rate or signal from pulse emitter water meter and proportional dosing with motor pump with inverter



Dosing Pump.it



INJECTA
the perfect dosing

Water Treatment



Performance data-TP.15 PISTON VERSION

PERFORMANCES TEST HAS BEEN DONE AT AMBIENT TEMPERATURE, WITH WATER, AT 1,5 mt SUCTION HEIGHT

MODELS	Ø PISTONS	STROKES/MIN.	FLOW RATES	PRESSURES SS316 / PVC	CONNECTIONS	WEIGHTS SS316 / PVC	MOTOR
TP15006A	6 mm	58	1,5 l/h	20 bar / 10 bar	1/4 " g.f.	9,8 Kg / 8,4 Kg	THREE PHASE 0,18 Kw SINGLE PHASE 0,25 kW
TP15006C	6 mm	116	3,0 l/h	20 bar / 10 bar	1/4 " g.f.	9,8 Kg / 8,4 Kg	
TP15011A	11 mm	58	5,0 l/h	20 bar / 10 bar	1/4 " g.f.	9,8 Kg / 8,4 Kg	
TP15011C	11 mm	116	10,0 l/h	25 bar / 10 bar	1/4 " g.f.	9,8 Kg / 8,4 Kg	
TP15017A	17 mm	58	11,0 l/h	20 bar / 10 bar	3/8" g.f.	9,8 Kg / 8,4 Kg	
TP15017C	17 mm	116	2,02 l/h	25 bar / 10 bar	3/8" g.f.	9,8 Kg / 8,4 Kg	
TP15025A	25 mm	58	25,0 l/h	20 bar / 10 bar	3/8" g.f.	9,8 Kg / 8,4 Kg	
TP15025C	25 mm	116	50,0 l/h	20 bar / 10 bar	3/8" g.f.	9,8 Kg / 8,4 Kg	

MODELLS	Ø PISTONS	STROKE/MIN..	FLOW RATES	PRESSURES SS316 / PVC	CONNECTIONS	WEIGHTS SS316 / PVC	MOTOR
TP15030A	30 mm	58	35,0 l/h	20 bar / 10 bar	3/8" g.f.	11,2 Kg / 9,8 Kg	THREE PHASE 0,25 Kw SINGLE PHASE 0,37 kW
TP15030C	30 mm	116	70,0 l/h	20 bar / 10 bar	3/8" g.f.	11,2 Kg / 9,8 Kg	
TP15038A	38 mm	58	55,0 l/h	17 bar / 10 bar	3/8" g.f.	12,8 Kg / 10 Kg	
TP15038C	38 mm	116	110,0 l/h	17 bar / 10 bar	3/8" g.f.	12,8 Kg / 10 Kg	
TP15048C	48 mm	58	85,0 l/h	10 bar / 10 bar	1/2" g.f.	12,8 Kg / 10 Kg	
TP15054A	48 mm	116	170,0 l/h	10 bar / 10 bar	1/2" g.f.	12,8 Kg / 10 Kg	
TP15054C	54 mm	58	110,0 l/h	8 bar / 8 bar	1/2" g.f.	14,6 Kg / 10,3 Kg	
TP15064A	54 mm	116	220,0 l/h	8 bar / 8 bar	1/2" g.f.	14,6 Kg / 10,3 Kg	
TP15064C	64 mm	58	152,0 l/h	6 bar / 6 bar	3/4" g.f.	15,7 Kg / 10,5 Kg	
TP15064C	64 mm	116	304,0 l/h	6 bar / 6 bar	3/4" g.f.	15,7 Kg / 10,5 Kg	

Dosing Pump

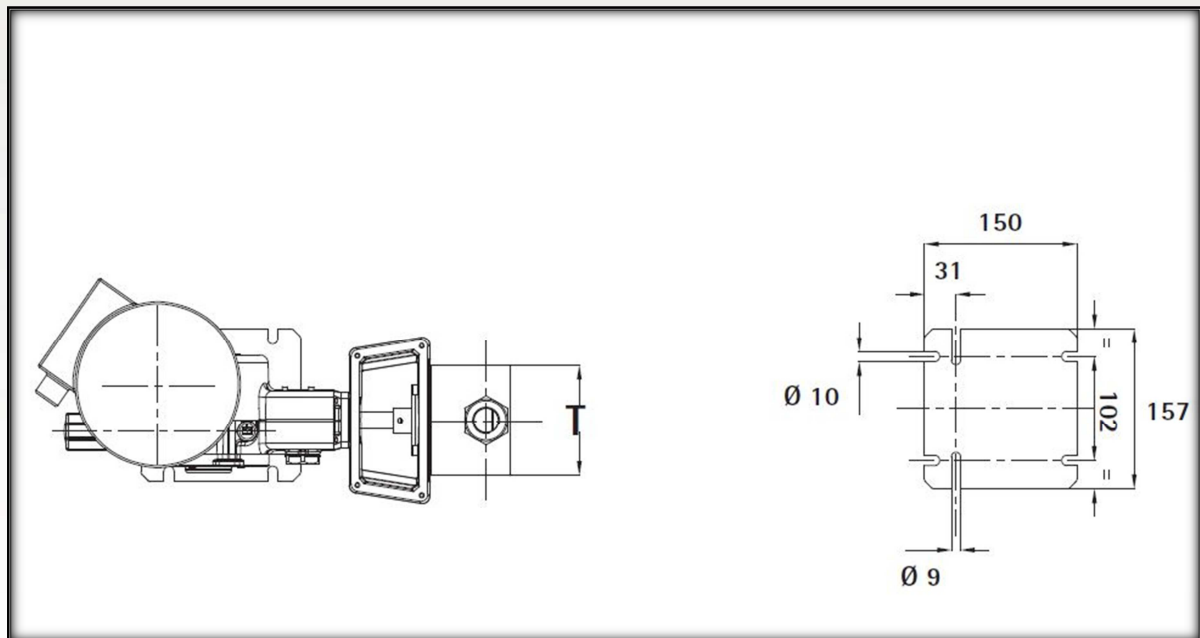
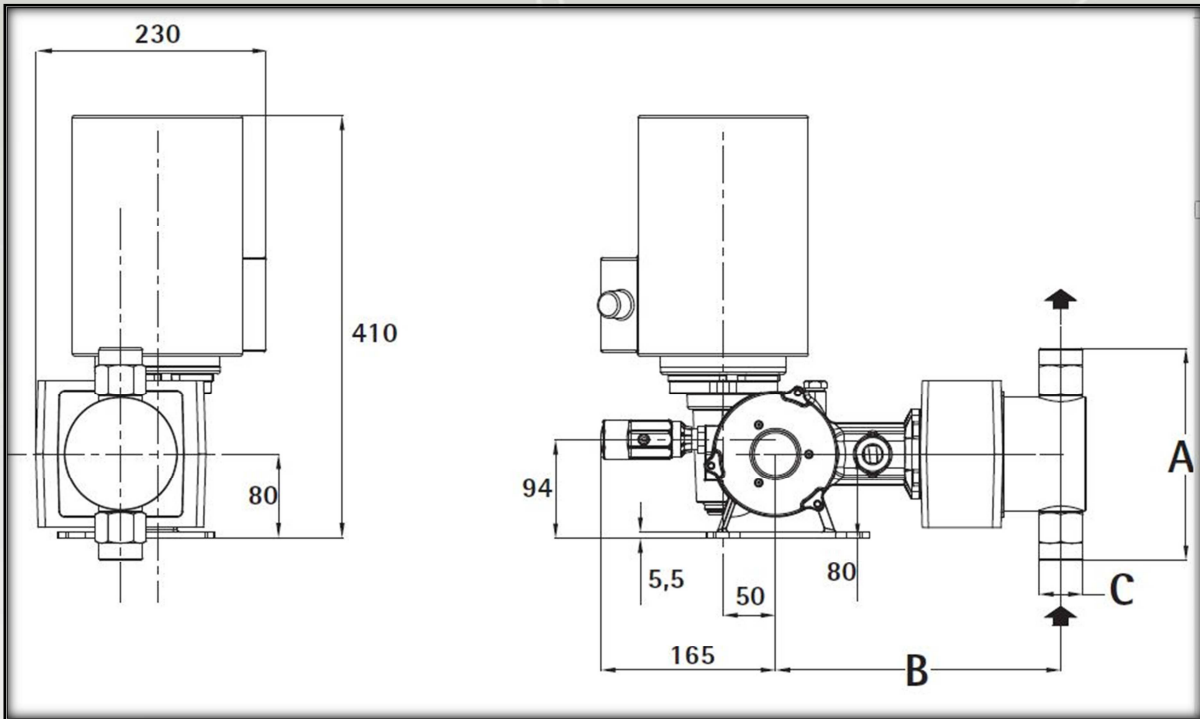


INJECTA
the perfect dosing

Water Treatment



Dimensional drawings - TP.15 PISTON VERSION



Dosing Pump.it



INJECTA
the perfect dosing

Water Treatment



Performance data - TP.25 PISTON VERSION

PERFORMANCES TEST HAS BEEN DONE AT AMBIENT TEMPERATURE, WITH WATER, AT 1,5 mt SUCTION HEIGHT

MODELLS	Ø PISTONS	STROKES/MIN.	FLOW RATES	PRESSURES SS316 / PVC	CONNECTIONS	WEIGHT SS316 / PVC	
TP25025A	25 mm	58	40,0 l/h	20 bar / 10 bar	3/8 " g.f.	15,5 Kg / 14,1 Kg	THREE PHASE 0,18 kW SINGLE PHASE 0,25 kW
TP25025C	25 mm	116	80,0 l/h	20 bar / 10 bar	3/8 " g.f.	15,5 Kg / 14,1 Kg	
TP25030A	30 mm	58	55,0 l/h	20 bar / 10 bar	3/8 " g.f.	15,5 Kg / 14,1 Kg	
TP25030C	30 mm	116	112,0 l/h	20 bar / 10 bar	3/8 " g.f.	15,5 Kg / 14,1 Kg	
TP25038A	38 mm	58	90,0 l/h	20 bar / 10 bar	1/2" g.f.	18,4 Kg / 15,6 Kg	THREE PHASE 0,37 kW SINGLE PHASE 0,55 kW
TP25038C	38 mm	116	180,0 l/h	20 bar / 10 bar	1/2" g.f.	18,4 Kg / 15,6 Kg	
TP25048A	48 mm	58	140,0 l/h	20 bar / 10 bar	1/2 " g.f.	18,4 Kg / 15,6 Kg	THREE PHASE 0,55 kW SINGLE PHASE 0,75 kW
TP25048C	48 mm	116	284,0 l/h	20 bar / 10 bar	1/2 " g.f.	18,4 Kg / 15,6 Kg	
TP25054A	54 mm	58	180,0 l/h	15 bar / 10 bar	1/2 " g.f.	20,2 Kg / 15,6 Kg	
TP25054C	54 mm	116	365,0 l/h	15 bar / 10 bar	1/2 " g.f.	20,2 Kg / 15,6 Kg	
TP25064A	64 mm	58	250,0 l/h	10 bar / 10 bar	3/4 " g.f.	21,3 Kg / 16,1 Kg	THREE PHASE 0,75 kW
TP25064C	64 mm	116	505,0 l/h	10 bar / 10 bar	3/4 " g.f.	21,3 Kg / 16,1 Kg	
TP25076A	76 mm	58	365,0 l/h	7 bar / 7 bar	1 " g.f.	28,2 Kg / 18,2 Kg	
TP25076C	76 mm	116	730,0 l/h	7 bar / 7 bar	1 " g.f.	28,2 Kg / 18,2 Kg	
TP25089A	89 mm	58	495,0 l/h	5 bar / 5 bar	1 " g.f.	30,4 Kg / 18,6 Kg	
TP25089C	89 mm	116	1000,0 l/h	5 bar / 5 bar	1 " g.f.	30,4 Kg / 18,6 Kg	

Dosing Pump.it

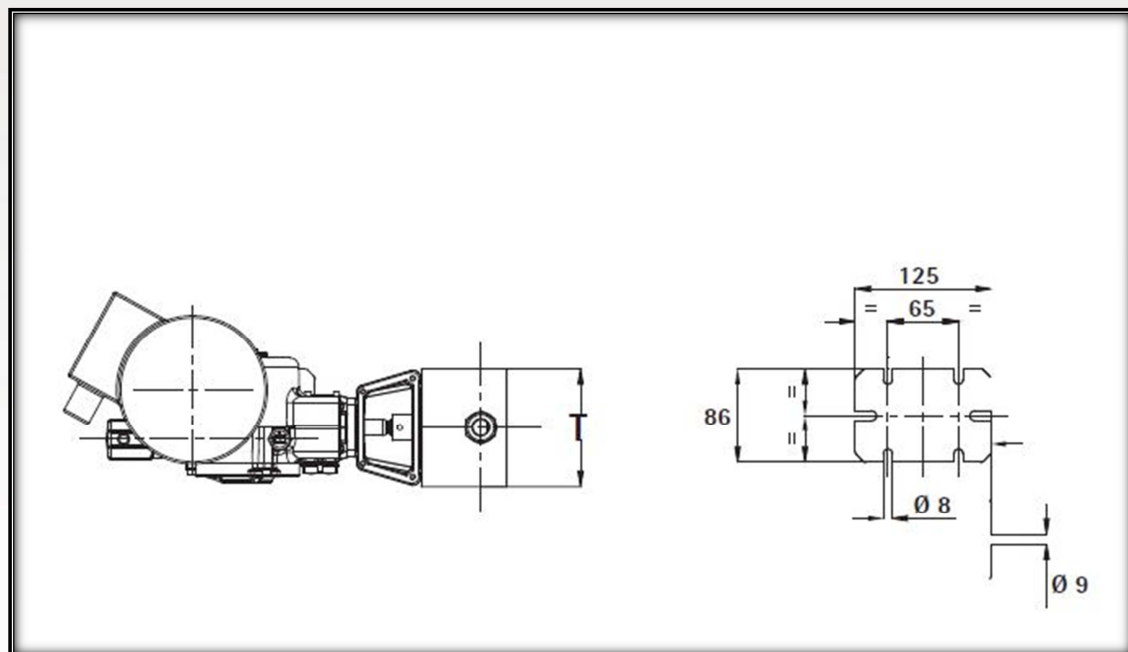
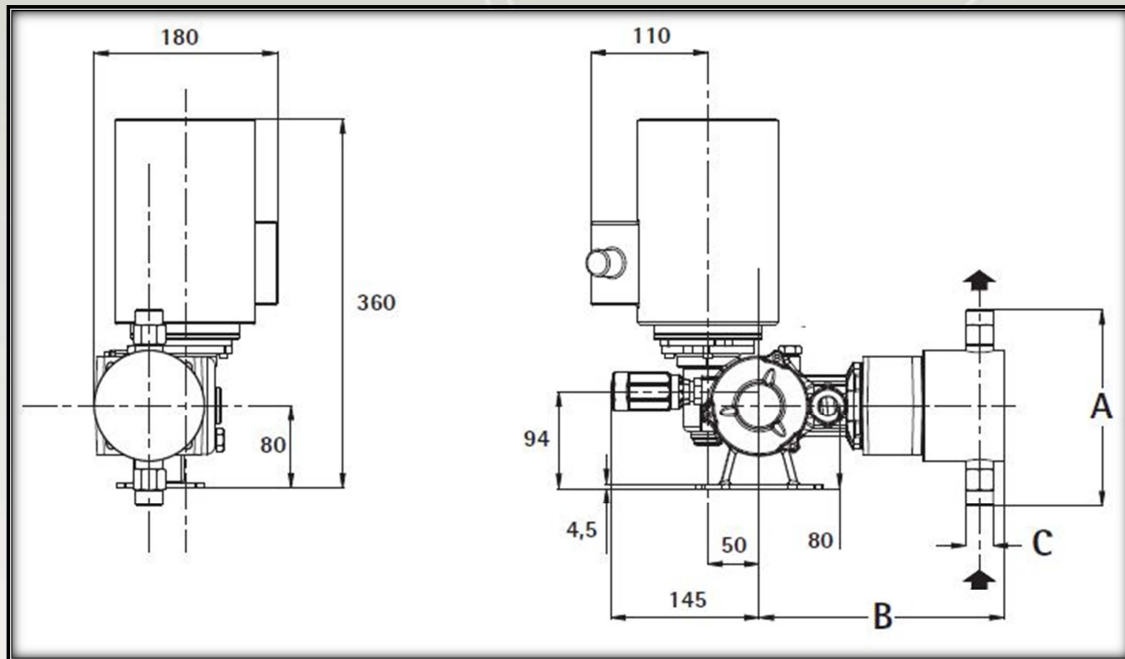


INJECTA
the perfect dosing

Water Treatment



Dimensional drawings - TP.25 PISTON VERSION



Dosing Pump.it



INJECTA
the perfect dosing

Water Treatment



Performance data - TM.2-4-6 DIAPHRAGM VERSION

PERFORMANCES TEST HAS BEEN DONE AT AMBIENT TEMPERATURE, WITH WATER, AT 1,5 mt SUCTION HEIGHT

MODEL	Ø DIAPHRAGM	L.STROKE	STROKEI/MIN.	FLOW RATES	PRESSIURES	CONNECTION	WEIGHTS SS316 - PVC/PP/PVDF	
TM02064A	64 mm	2 mm	58	5,0 l/h	10 bar	1/4" g.f.	10,2 Kg – 8,5 Kg	THREE PHASE 0,18 kW SINGLE PHASE 0,25 Kw
TM02064C	64 mm	2 mm	116	11,0 l/h	10 bar	1/4" g.f.	10,2 Kg – 8,5 Kg	
TM02094A	94 mm	2 mm	58	20,0 l/h	10 bar	3/8" g.f.	10,7 Kg – 8,4 Kg	THREE PHASE 0,25 kW SINGLE PHASE 0,37 Kw
TM02094C	94 mm	2 mm	116	40,0 l/h	10 bar	3/8" g.f.	10,7 Kg – 8,4 Kg	
TM04108A	108 mm	4 mm	58	60,0 l/h	10 bar	3/8" g.f.	13,3 Kg – 10,1 Kg	THREE PHASE 0,37 kW SINGLE PHASE 0,55 Kw
TM04108C	108 mm	4 mm	116	120,0 l/h	10 bar	3/8" g.f.	13,3 Kg – 10,1 Kg	
TM06138A	138 mm	6 mm	58	155,0 l/h	7 bar	3/4" g.f.	18,4 Kg – 12,3 Kg	
TM06138C	138 mm	6 mm	116	310,0 l/h	7 bar	1 g.f.	18,4 Kg – 12,3 Kg	
TM06165A	165 mm	6 mm	58	230,0 l/h	5 bar	1 g.f.	22,0 Kg – 13,2 Kg	
TM06165C	165 mm	6 mm	116	460,0 l/h	5 bar	1 g.f.	22,0 Kg – 13,2 Kg	

Dosing Pump.it

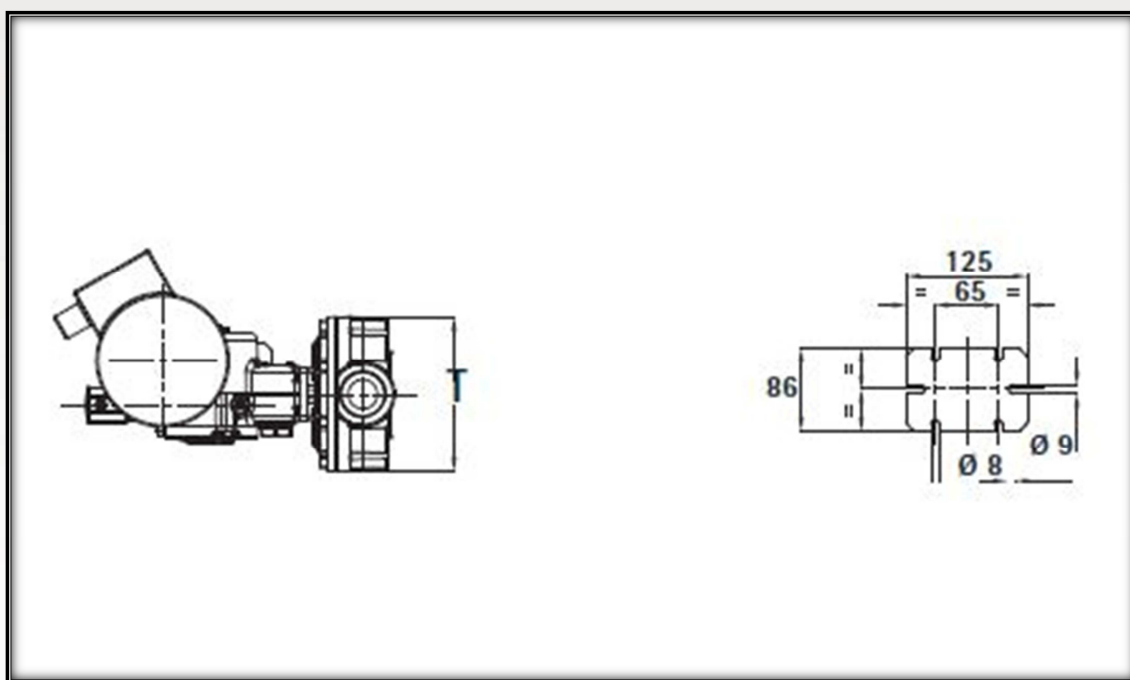
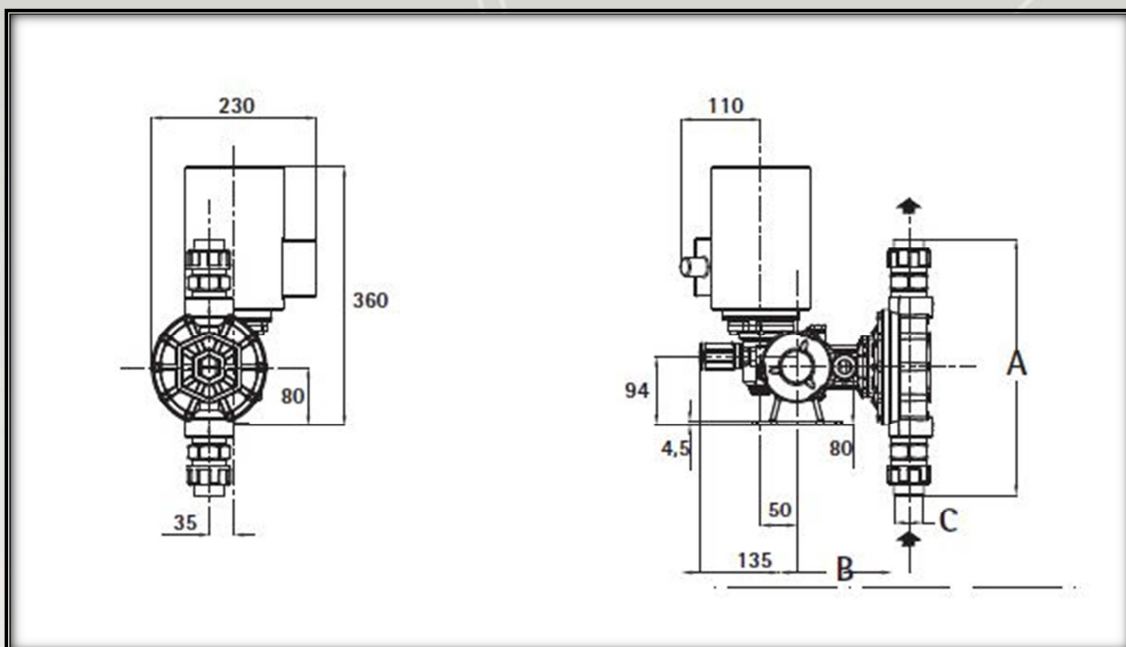


INJECTA
the perfect dosing



Water Treatment

Dimensional drawings-TM.2-4-6 DIAPHRAGM VERSION



Dosing Pump.it



Water Treatment



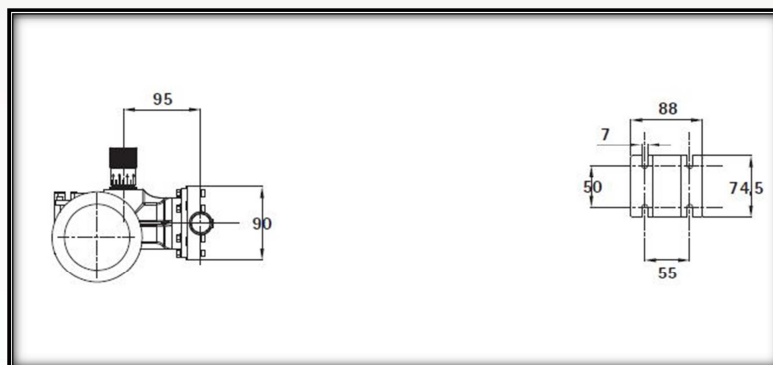
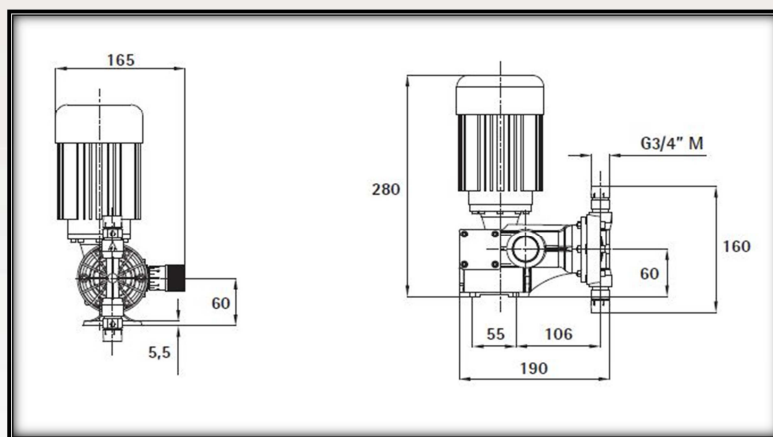
Performance data -TM.5 DIAPHRAGM VERSION

PERFORMANCES TEST HAS BEEN DONE AT AMBIENT TEMPERATURE, WITH WATER, AT 1,5 mt SUCTION HEIGHT

MODEL	Ø DIAPHRAGM	STROKE/MIN.	FLOW RATES	PRESSIURES	CONNECTION SS316 - PVC	WEIGHTS SS316 - PVC/PP	THREE PHASE 0,09 kW
TM05050E	50 mm	41	15,0 l/h	5 bar / psi 72,5	1/2" g.m. - 3/4" g.m.	5,3 Kg – 4,5 Kg	
TM05050A	50 mm	58	20,0 l/h	5 bar / psi 72,5	1/2" g.m. - 3/4" g.m.	5,3 Kg – 4,5 Kg	
TM05050F	50 mm	82	30,0 l/h	5 bar / psi 72,5	1/2" g.m. - 3/4" g.m.	5,3 Kg – 4,5 Kg	
TM05050C	50 mm	116	42,0 l/h	5 bar / psi 72,5	1/2" g.m. - 3/4" g.m.	5,3 Kg – 4,5 Kg	
TM05050G	50 mm	164	60,0 l/h	5 bar / psi 72,5	1/2" g.m. - 3/4" g.m.	5,3 Kg – 4,5 Kg	

SINGLEPHASE version available at max 1 bar

Dimensional drawings -TM.5 DIAPHRAGM VERSION



Dosing Pump.it

